

# Central Missouri's Lake of the Ozarks Demographic Profile 2017



**"Best Recreational Lake"**

IN THE NATION AS CHOSEN BY

Readers of **USA TODAY & 10Best**



## Lake of the Ozarks Facts & Figures

**Water Covers 54,000 Acres**

**95 Miles Long** (Truman Dam to Bagnell Dam)

**1,150 Miles of Shoreline**

Including the Counties and Communities of:  
Camden County, Miller County, Morgan County

Camdenton, Eldon, Lake Ozark, Osage Beach,  
and Versailles



**Lake of the Ozarks**  
Regional Economic Development Council  
Quality Life. Quality Business.

Last Update: May 16, 2017





Photo By: Lake of the Ozarks CVB

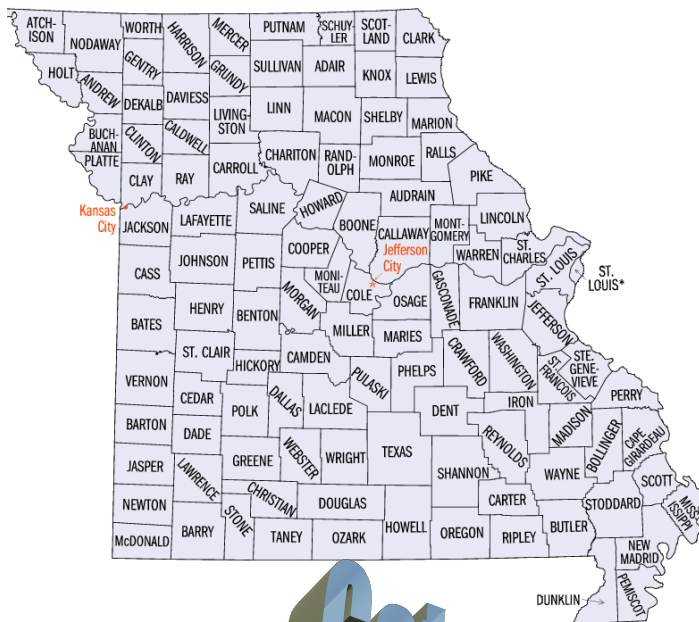
# Table of Contents

(Click on Section to Go Directly to Related Data)

Missouri Facts and Figures .....	4
Population Data .....	9
Education Data .....	14
Income Data .....	23
Employment Data .....	27
Taxation Data .....	37
Transportation and Logistics Data .....	43
Utilities and Telecommunications Data .....	53
Lake Area Information .....	61



**Lake of the Ozarks**  
Regional Economic Development Council  
Quality Life. Quality Business.



## Facts

State Population 6,093,000 (2016)

17th Largest State in population

114 Counties + City of St. Louis

## Figures

Land Area (sq. mi.)

Total 69,704.31

Land 68,885.93

Water 818.39

Median Family Income (2016)

\$60,809

Per Capita Personal Income (2016)

\$43,723

Unemployment Rate (March 2017) 3.9%

Cost of Living (2016 1Q) 11th Lowest in the Nation

Sales Tax Rate (2016) 4.225%

Gasoline Tax Rate (2016) State \$0.17, Federal \$0.184 gallon

Gross State Product (2015) \$295 Billion (21th largest State GDP)

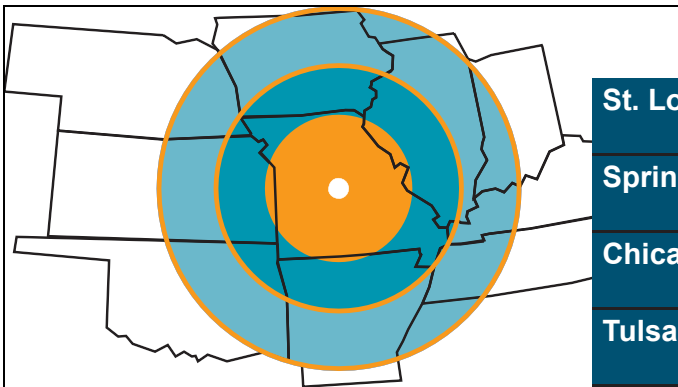


Sources: American Community Survey 2014 5 yr.; Bureau of Economic Analysis, MERIC



# The Lake of the Ozarks Region

Lake of the Ozarks has experienced tremendous growth and development over the last 20 years and now boasts a population of more than 124,886 permanent residents and a thriving tourism industry. The popularity of the Lake of the Ozarks region is accentuated by its central location in Missouri; it is a similar distance from the state's largest population centers, St. Louis and Kansas City. Because of the unique ability to build at the water's edge and the availability of diverse activities, the Lake Area is projected to experience continued growth and development.



St. Louis	165 Miles	Kansas City	198 Miles
Springfield	100 Miles	Branson	133 Miles
Chicago	463 Miles	Omaha	386 Miles
Tulsa	278 Miles	Wichita	286 Miles
OK City	481 Miles	Little Rock	307 Miles
Des Moines	325 Miles	Memphis	298 Miles

Within a 165-mile radius, Lake of the Ozarks is a short driving distance to nearly all of Missouri, in addition to portions of Arkansas, Kansas, Illinois and Iowa.

## State Parks

The beauty of our region can be experienced at our State Parks. Lake of the Ozarks offers visitors the opportunity to visit the great outdoors with two state parks within our region:

**Ha Ha Tonka State Park**  
**1491 State Road D**  
**Camdenton, MO 65020**

**Lake of the Ozarks State Park**  
**403 Hwy 134**  
**Kaiser, MO 65047**

**Pa He Tsi Park (part of LOTO State Park)**  
**Nichols Road**  
**Osage Beach, MO 65065**

Ha Ha Tonka State Park was voted #4 State Park in America by readers of USA TODAY and 10Best



**MISSOURI**  
**DEPARTMENT OF**  
**NATURAL RESOURCES**



enjoy the show

FY 2016 Missouri State Tax Revenue reflects that every **\$1.00** spent on Tourism brought **\$3.98** back to Missouri

FY 2016 Economic impact of tourism **\$16.5 Billion** (**+\$0.6B from 2015**)

FY 2016 Total spending in tourism-related SIC codes **\$13.1 Billion** (**+\$0.7B**)

FY 2016 Missouri hosted more than **41.7 Million Visitors** (**+1.3M**)

FY 2016 **26%** of visitors come in Spring, **24%** Summer, **27%** in Fall and **23%** in Winter

FY 2016 Out-of-State Visitors **57%** In-State Visitors **43%**

FY 2016 The number of Missourians employed in tourism industry: **307,937**

FY 2016 Shopping is the most common activity for Missouri visitors, followed by local dining, city sightseeing, and family attractions.

Source: <http://ded.mo.gov>, [www.visitmo.com](http://www.visitmo.com)

### Total Tourism Spending by Region

Of the \$12.4 Billion total tourism spending in:

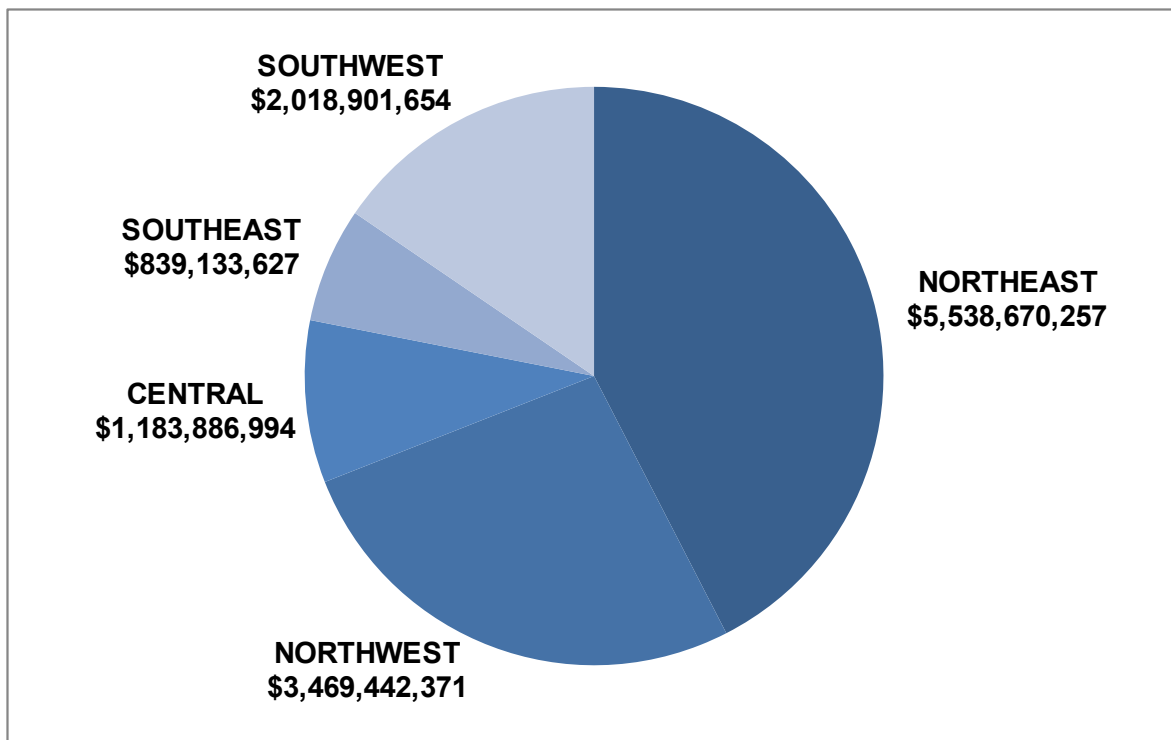
- Northeast region accounts for **\$5.5 billion** or **43%** of Missouri's tourism economy
  - Northwest: **\$3.4 billion** or **27%**
  - Central **\$1.2 billion** or **9%**
  - Southeast **\$0.8 billion** or **6%**
  - Southwest **\$2.0 billion** or **15%**
- (see chart on next page)



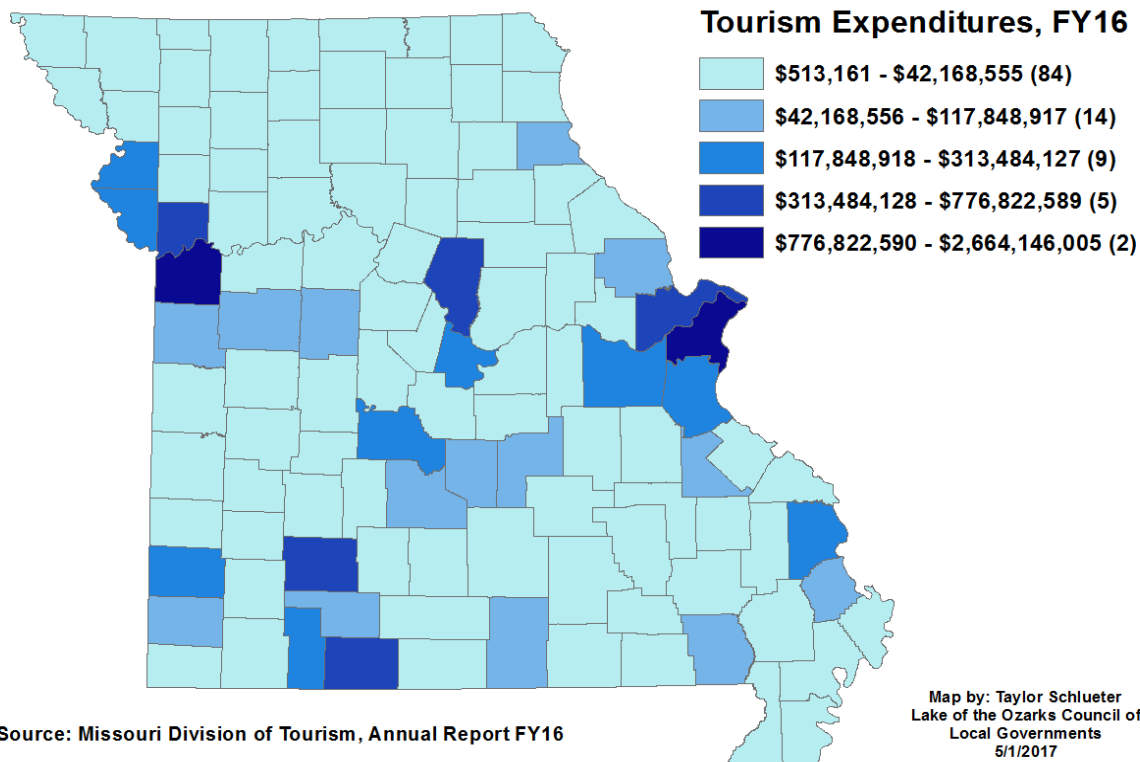
Lake of the Ozarks Convention & Visitor Bureau  
P.O. Box 1498 Osage Beach, MO 65065



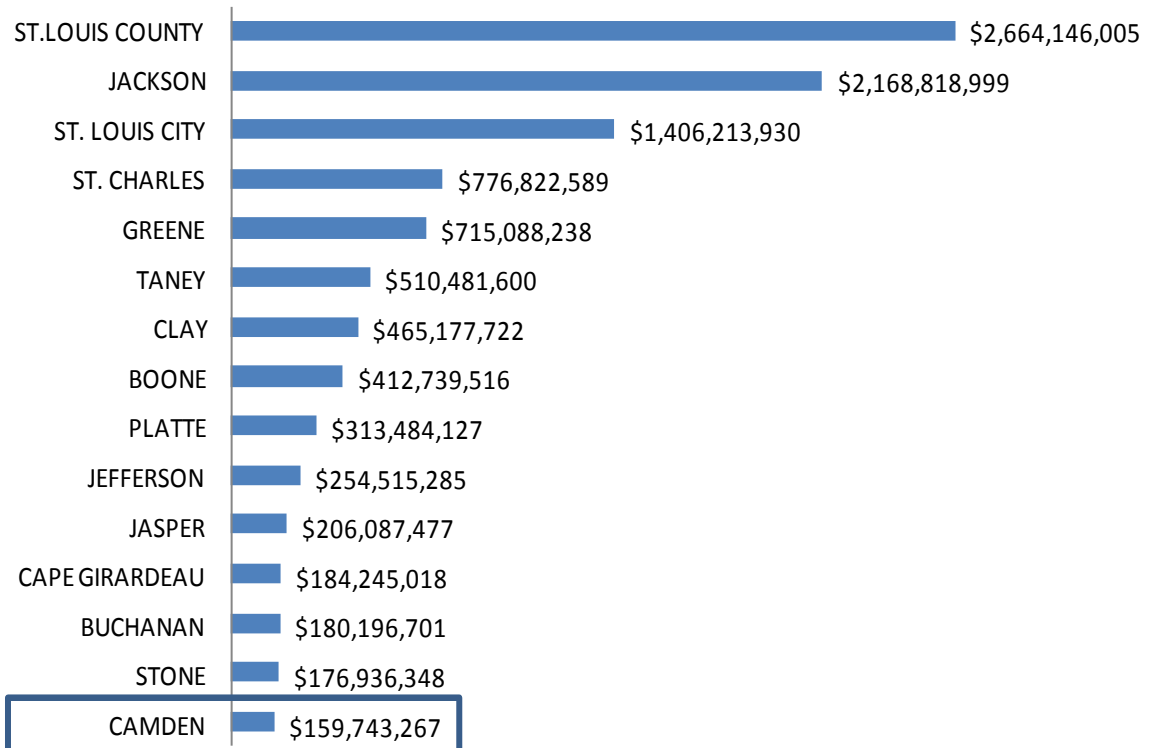
# Total Tourism Spending by Region, FY 2016



## TOTAL EXPENDITURES IN 17 TOURISM-RELATED SIC CODES, FY16

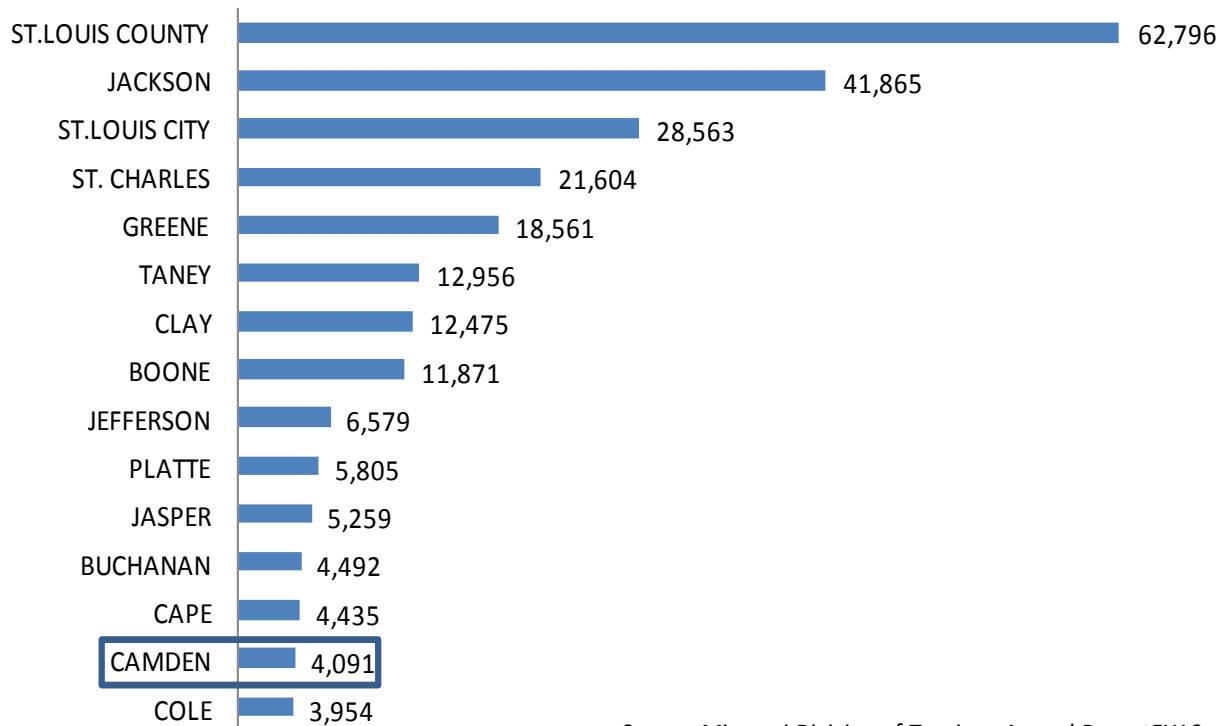


## TOP 15 TOTAL EXPENDITURES IN 17 TOURISM-RELATED SIC CODES BY COUNTY, FY16



Source: Missouri Division of Tourism, Annual Report FY16

## TOURISM-RELATED EMPLOYMENT, FY16



Source: Missouri Division of Tourism, Annual Report FY16



## Population Data

- County Population/Projections
  - City Populations & Estimates
    - County Population by Age
- County Populations by Race & Ethnicity
  - County Housing
- County Populations by Employment Status
  - Population Density Map

[Return to Table of Contents](#)



**Lake of the Ozarks**  
Regional Economic Development Council  
*Quality Life. Quality Business.*

## County Population/Projections

	2000	2010	2020 (est)	2030 (est)	% Change '10-'30
<b>Camden</b>	37,051	44,002	46,290	49,124	12%
<b>Miller</b>	23,564	24,748	27,277	28,404	15%
<b>Morgan</b>	19,309	20,565	23,357	24,827	21%

Source: <http://oa.mo.gov/bp/projections/TotalPop.pdf>

## City Populations & Estimates

	2010	2015	Change	
			#	%
<b>Camden County</b>				
<b>Camdenton</b>	3,718	3,844	126	3.4%
<b>Linn Creek</b>	244	244	0	0.0%
<b>Osage Beach</b>	4,351*	4,433*	82	1.9%
<b>Stoutland</b>	192	192	0	0.0%
<b>Sunrise Beach</b>	431	449	18	4.2%
<b>Village of Four Seasons</b>	2,217	2,233	16	0.8%

Source: Census Annual Population Estimates, 2015 \*A portion of Osage Beach extends into Miller County

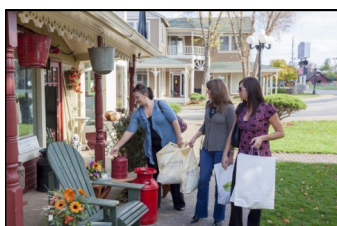


Photo By: Lake of the Ozarks CVB

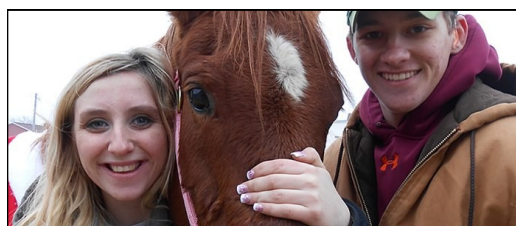


Photo By: Camdenton Area Chamber of Commerce

## City Populations & Estimates

	2010	2015	Change	
			#	%
<b>Miller County</b>				
<b>Bagnell</b>	93	95	2	2.2%
<b>Brumley</b>	91	93	2	2.2%
<b>Eldon</b>	4,567	4,632	65	1.4%
<b>Iberia</b>	736	745	9	1.2%
<b>Lake Ozark</b>	1,586	1,761	175	11%
<b>Olean</b>	128	130	2	1.6%
<b>St. Elizabeth</b>	336	341	5	1.5%
<b>Tuscumbia</b>	203	205	3	1.5%

Source: Census Annual Population Estimates, 2015 \*A portion of Osage Beach extends into Miller County



## City Population & Estimates

	2010	2015	Change	
			#	%
<b>Morgan County</b>				
<b>Barnett</b>	203	201	-2	-1%
<b>Gravois Mills</b>	144	143	-1	-0.7%
<b>Laurie</b>	945	932	-13	-1.4%
<b>Stover</b>	1,094	1,074	-20	-1.8%
<b>Syracuse</b>	172	170	-2	-1.2%
<b>Versailles</b>	2,482	2,440	-42	-1.7%

Source: Census Annual Population Estimates, 2015



Photo By: Camdenton Area Chamber of Commerce



Photo By: Lake of the Ozarks CVB

## County Population by Age

Year 2010	Camden		Miller		Morgan	
<b>&lt;20</b>	9,264	21%	6,719	27%	5,034	24%
<b>20 - 44</b>	10,510	24%	7,182	29%	4,938	24%
<b>45 - 64</b>	14,694	33%	6,950	28%	6,058	29%
<b>65 - 84</b>	8,813	20%	3,363	14%	4,043	20%
<b>85&gt;</b>	721	2%	534	2%	492	2%

Year 2015	Camden		Miller		Morgan	
<b>&lt;20</b>	8,748	20%	6,502	26%	4,837	24%
<b>20 - 44</b>	10,375	23%	7,044	28%	4,864	24%
<b>45 - 64</b>	13,826	31%	6,943	28%	5,655	28%
<b>65 - 84</b>	10,465	24%	4,032	16%	4,276	21%
<b>85&gt;</b>	823	2%	592	2%	539	3%

Source: US Census, 2010 Census, Census Annual Population Estimates, 2015



Photo By: Lake of the Ozarks CVB



Photo By: Camdenton Area Chamber of Commerce

## County Populations by Race & Ethnicity

	Camden		Miller		Morgan	
	2010	2015	2010	2015	2010	2015
<b>White</b>	42,468	42,443	23,941	24,001	19,770	19,475
<b>Black/African American</b>	179	223	99	110	131	251
<b>American Indian/Alaska Native</b>	219	254	136	251	135	5
<b>Asian</b>	184	309	70	85	76	10
<b>Native Hawaiian/Pacific Islander</b>	8	0	36	0	2	0
<b>Some Other Race</b>	82	310	68	199	30	47
<b>Two or More Races</b>	382	455	198	310	236	437
<b>Hispanic/Latino</b>	1,014	1,098	343	433	365	393

Source: US Census, 2010 Census, 2015 ACS 5yr

## County Housing

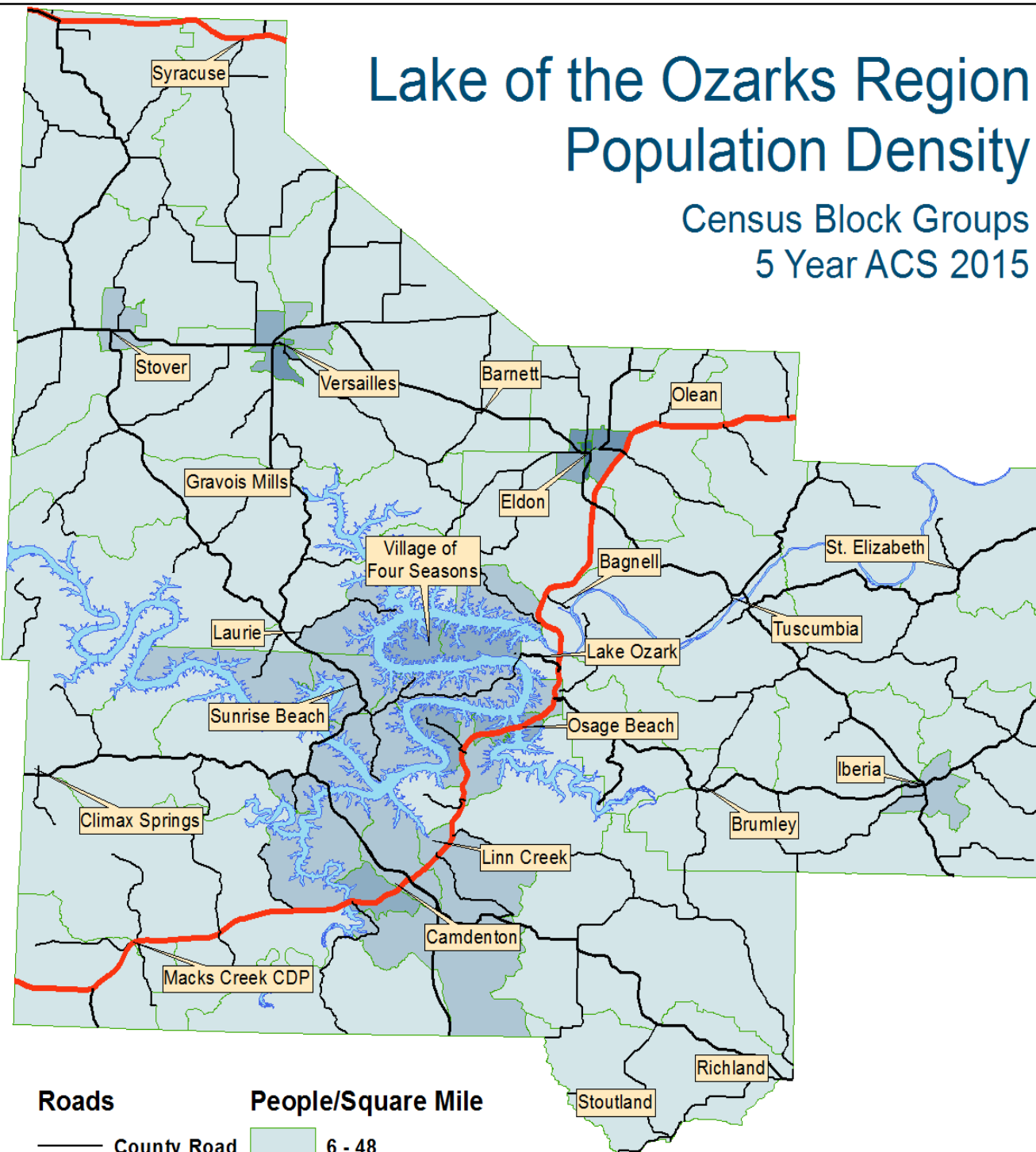
	Camden		Miller		Morgan	
	2010	2015	2010	2015	2010	2015
<b>Total Housing Units</b>	41,183	41,234	12,758	12,739	15,517	15,421
<b>Occupied Housing Units</b>	19,068	16,748	9,917	9,452	8,450	7,812
<b>Owner-Occupied Units</b>	15,276	13,178	7,341	7,334	6,702	5,961
<b>Renter-Occupied Units</b>	3,792	3,570	2,576	2,118	1,748	1,851
<b>Ave. Household Size</b>	2.27	2.49	2.47	2.53	2.40	2.49
<b>Ave. Family Size</b>	2.68	2.93	2.97	3.08	2.91	3.06

Source: US Census, 2010 Census, 2015 ACS 5yr



# Lake of the Ozarks Region Population Density

Census Block Groups  
5 Year ACS 2015



## Roads

- County Road
- MO Highway
- US Highway

## People/Square Mile

	6 - 48
	49 - 151
	152 - 348
	349 - 681
	682 - 1,486
	1,487 - 2,105

Map by: Taylor Schlueter  
Lake of the Ozarks Council of  
Local Governments  
Source: MSDIS, US Census  
Date: 5/10/2017



**Lake of the Ozarks**  
Regional Economic Development Council  
Quality Life. Quality Business.



Photo By: Lake of the Ozarks CVB

## Education Data

- County Educational Attainment
- County Public, Private, College, University Schools
  - County Education Statistics
- Public and Private School Locations

[Return to Table of Contents](#)



**Lake of the Ozarks**  
Regional Economic Development Council  
*Quality Life. Quality Business.*

## County Educational Attainment, 2015

	Camden	Miller	Morgan
<b>Population 18-24 years</b>	2,818	1,911	1,358
<b>&lt; than High School Graduate</b>	17.7%	23.6%	32.4%
<b>High School Graduate (includes equivalency)</b>	39.4%	35.4%	42.9%
<b>Some College/Assoc. Degree</b>	40.3%	36.4%	22.5%
<b>Bachelor's Degree &gt;</b>	2.6%	4.6%	2.1%
<b>Population 25 years &gt;</b>	32,867	17,126	14,426
<b>Less than 9th Grade</b>	4.3%	5.0%	8.6%
<b>9-12 Grade (no diploma)</b>	8.0%	8.9%	12.2%
<b>High School Graduate (includes equivalency)</b>	36.0%	42.5%	41.3%
<b>Some College (no degree)</b>	22.7%	21.5%	19.1%
<b>Associate's Degree</b>	7.9%	5.8%	5.3%
<b>Bachelor's Degree</b>	13.6%	11.0%	9.0%
<b>Graduate/Professional Degree</b>	7.5%	5.4%	4.4%

Source: US Census, 2015 ACS 5yr







Photo: Camdenton High School

## County Public, Private, College, University Schools 2016

Camden County Schools	Number of Students	Public	Private	College/ University	Other/ Alternative
Camdenton High	1297	X			
Camdenton Middle	641	X			
Climax Springs Elementary	109	X			
Climax Springs High	113	X			
Dogwood Elementary	653	X			
Hawthorn Elementary	503	X			
Hurricane Deck Elementary	171	X			
Juvenile Justice Center	3				X
Lake Career & Technical Center	0			X	X
Lake West Christian Academy	63		X		
Life Christian University	22				X
Macks Creek Elementary	191	X			
Macks Creek High	134	X			
Oak Ridge Intermediate	629	X			
Osage Beach Elementary	240	X			
Stoutland Elementary	219	X			
Stoutland High	217	X			
State Fair Community				X	
Columbia College				X	
Online College Programs	Multiple			X	

Source: MO DESE, School Report Card, 2016

County Public, Private, College, University Schools 2016					
Miller County Schools	Number of Students	Public	Private	College/ University	Other/ Alternative
Dogwood Hills	14				X
Eldon Career Center				X	
Eldon High	605	X			
Eldon Middle	264	X			
Eldon Montessori	19		X		
Eldon Upper Elementary	427	X			
Iberia Elementary	392	X			
Iberia High	322	X			
Lakeview Christian	19		X		
Miller Co. Elementary	144	X			
Our Lady of the Snows	81		X		
Eldon South Elementary	537	X			
St. Elizabeth Elementary	137	X			
St. Elizabeth High	110	X			
Tuscumbia High	64	X			
Heritage Elementary	435	X			
Osage High School	551	X			
Osage Middle School	437	X			
Osage Upper Elementary	436	X			

Source: MO DESE, School Report Card, 2016



Photo: School of the Osage Heritage Elementary



Photo : Morgan County R-II High School

## County Public, Private, College, University Schools 2016

Morgan County Schools	Number of Students	Public	Private	College/ University	Other/ Alternative
Dogwood Grove	28		X		
Morgan Co. R-II Elementary	566	X			
Morgan Co. R-II High	384	X			
Morgan Co. R-II Middle	309	X			
Morgan Co. R-II South Elementary	36	X			
Morgan Co. R-I Elementary	363	X			
Morgan Co. R-I High	286	X			
St. Paul Lutheran	36		X		

Source: MO DESE, School Report Card, 2016



## County Education Statistics 2015

	Graduation Rate	Dropout Rate	Students/ Classroom Teacher	# of Students	# of Teachers and certified Staff
<b>Camden County Districts</b>					
Camdenton R-III	93.65%	2.1%	21	4,134	416
Climax Springs R-IV	100.00%	1.3%	10	222	34
Macks Creek R-V	100.00%	1.2%	11	325	48
Stoutland R-II	97.37%	0.0%	17	436	45
<b>Miller County Districts</b>					
Eldon R-I	95.75%	1.2%	20	1,833	188
Miller Co. R-III	79.17%	8.2%	11	208	44
St. Elizabeth R-IV	100.00%	0%	15	247	40
School of the Osage R-II	98.33%	0.5%	17	1,859	177
Iberia R-V	98.25%	0%	17	714	69
<b>Morgan County Districts</b>					
Morgan Co. R-I	100.00%	0%	18	649	60
Morgan Co. R-II	94.74%	0%	16	1,295	145

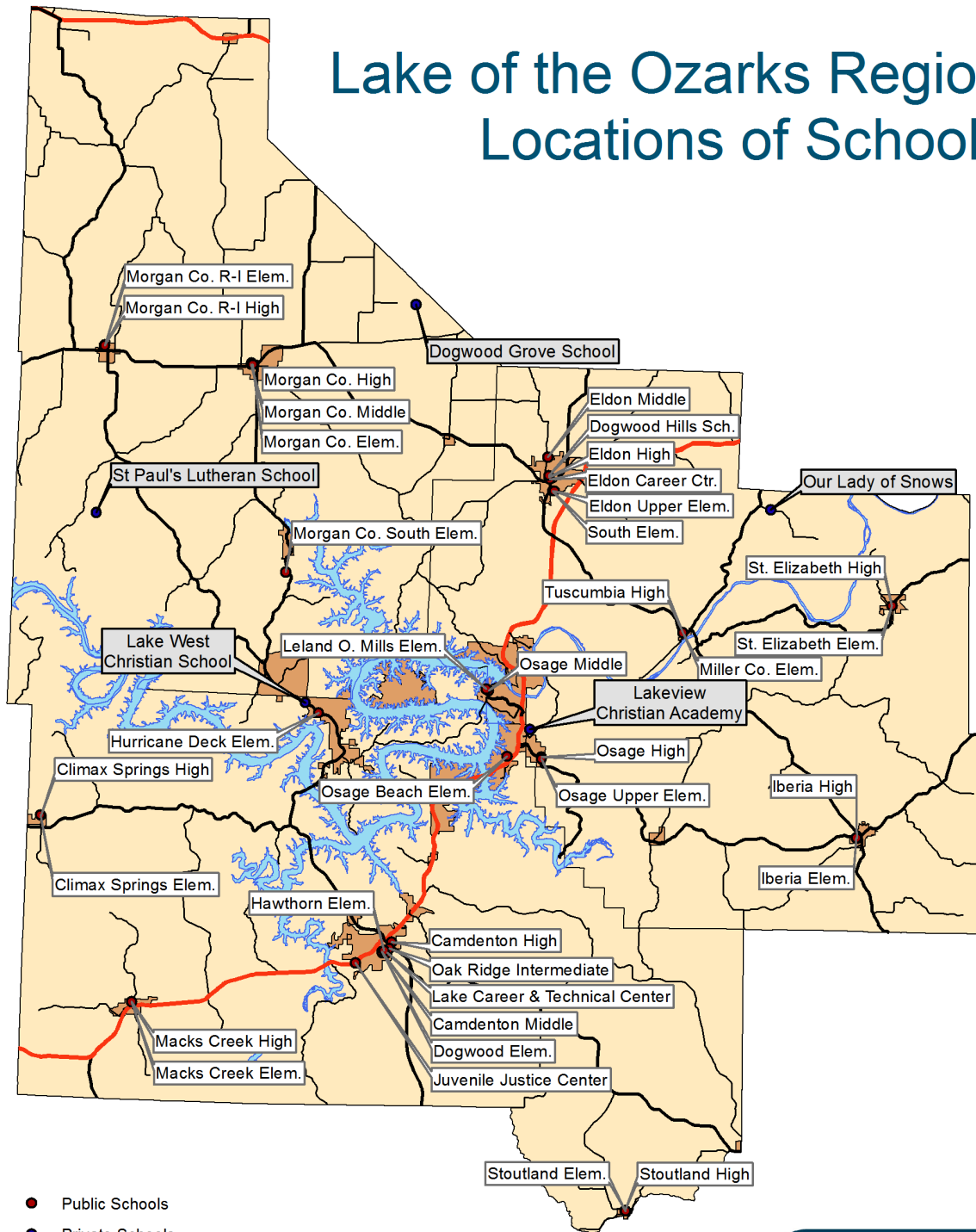
Source: MO DESE, District Report Card, 2015



Photo: Tuscumbia High School



# Lake of the Ozarks Region Locations of Schools



- Public Schools
- Private Schools
- State Numbered Highway
- State Lettered Highway
- US Highway

Map by: Andy Thomason  
Lake of the Ozarks Council of  
Local Governments  
Source: MSDIS  
Date: 1/8/2015



**Lake of the Ozarks**  
Regional Economic Development Council  
Quality Life. Quality Business.



Photo By: Lake of the Ozarks CVB

## **Income Data**

- **County Populations by Household Income**
- **Map of Statewide Household Income, Census Tracts**
- **Map of Regional Household Income, Block Groups**

[Return to Table of Contents](#)



**Lake of the Ozarks**  
Regional Economic Development Council  
*Quality Life. Quality Business.*



Photo By: Lake of the Ozarks CVB

## County Populations by Household Income (2000, 2015 ACS 5 yr.)

	Camden		Miller		Morgan	
	2000	2015	2000	2015	2000	2015
<b>Total Households</b>	15,740	16,748	9,288	9,452	7,847	7,812
<b>&lt; \$10,000</b>	1,313	1,194	1,046	942	912	1,048
<b>\$10,000-\$14,999</b>	1,216	1,047	948	679	797	635
<b>\$15,000-\$24,999</b>	2,471	2,023	1,648	1,507	1,446	1,115
<b>\$25,000-\$34,000</b>	2,657	2,226	1,623	1,163	1,376	1,308
<b>\$35,000-\$49,999</b>	3,077	2,771	1,752	1,635	1,368	928
<b>\$50,000-\$74,999</b>	2,777	3,354	1,451	1,484	1,194	1,404
<b>\$75,000-\$99,999</b>	1,185	1,977	480	843	363	738
<b>\$100,000 - \$149,999</b>	605	1,331	199	841	240	470
<b>\$150,000 - \$199,999</b>	197	374	88	123	77	135
<b>\$200,000&gt;</b>	242	451	53	235	74	31
<b>Median Household Income</b>	\$35,840	\$44,816	\$30,977	\$38,094	\$30,659	\$33,525
<b>Median Household Income (Inflation Adjusted 2015 Dollars)*</b>	\$49,330	\$44,816	\$42,636	\$38,094	\$42,199	\$33,525

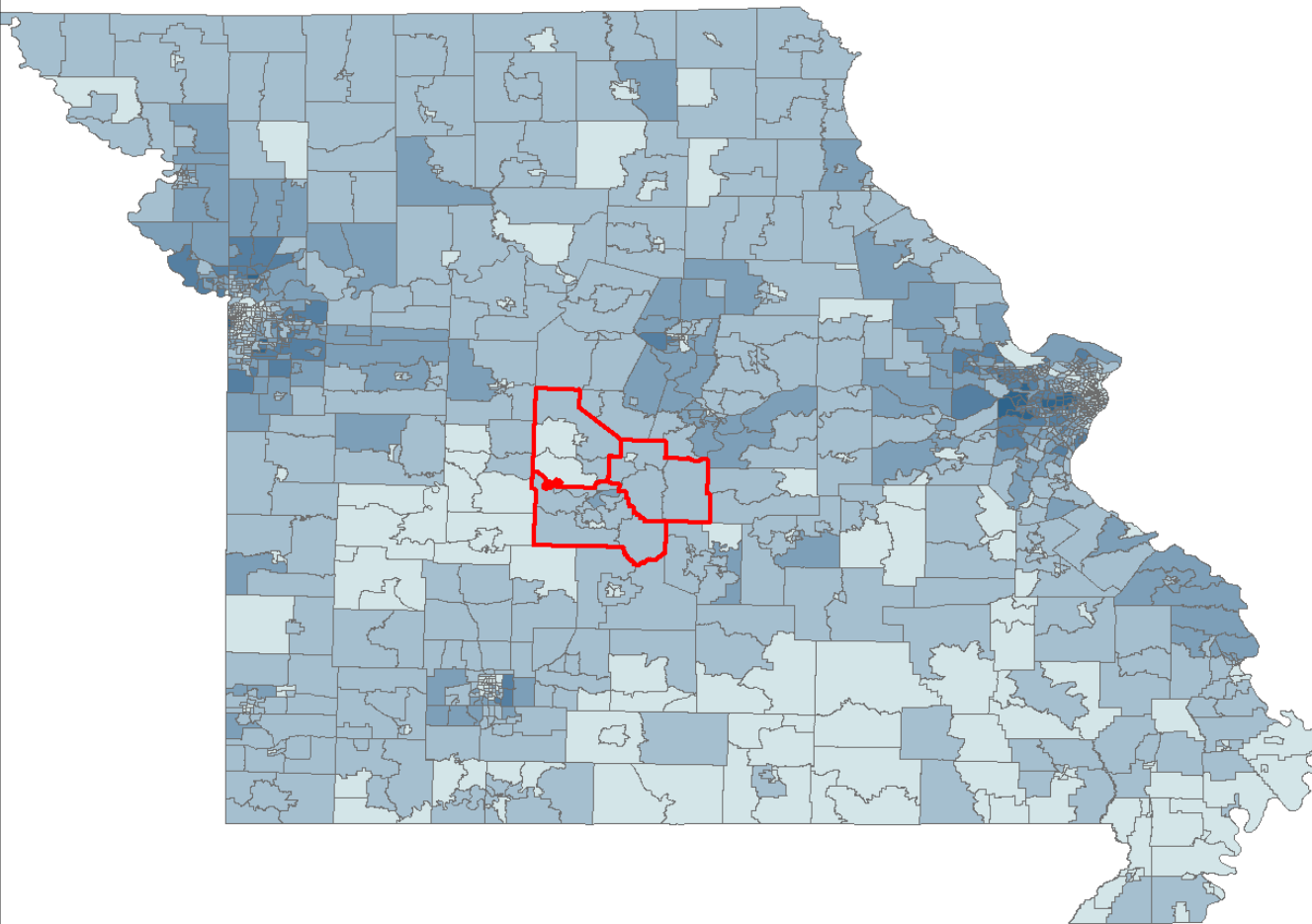
Source: US Census, 2000 Census, 2015 ACS 5 yr

\*In order to accurately compare income over time, it is useful to adjust income from past time periods for inflation. Incomes and cost-of-living have increased from 2000 to 2014. The adjustment shows an income of \$35,840 in 2000 has similar buying power as an income \$49,271 in 2014. The adjustment was made using the BLS CPI calculator.

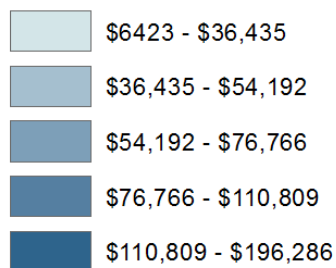


# State of Missouri Household Income

Census Tracts  
5 Year ACS 2015



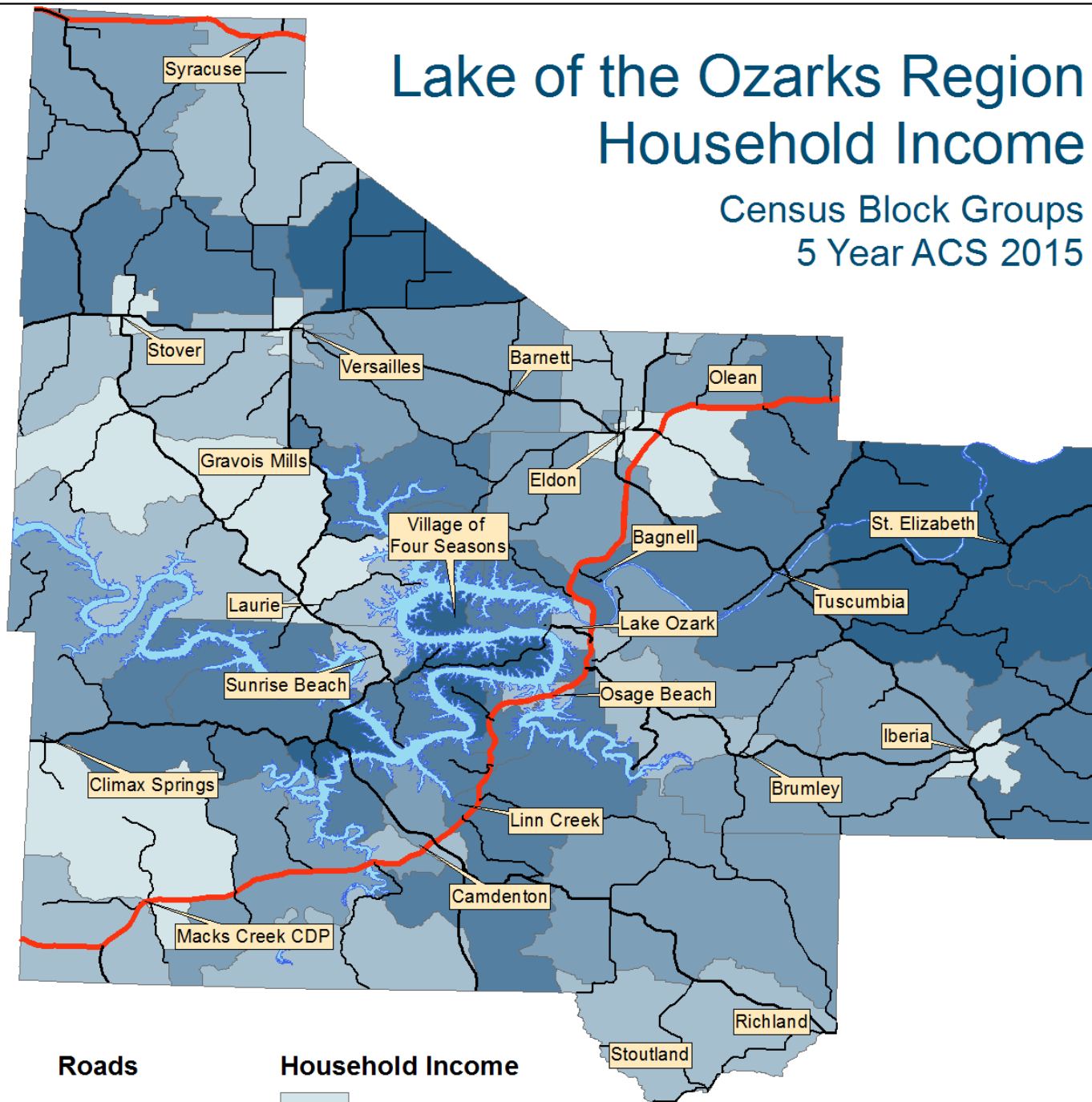
## Median Household Income



Map by: Taylor Schlueter  
Lake of the Ozarks Council of  
Local Governments  
Source: MSDIS, US Census  
Date: 5/11/2017

# Lake of the Ozarks Region Household Income

Census Block Groups  
5 Year ACS 2015



Map by: Taylor Schlueter  
Lake of the Ozarks Council of  
Local Governments  
Source: MSDIS, US Census  
Date: 5/11/2017



**Lake of the Ozarks**  
Regional Economic Development Council  
Quality Life. Quality Business.

## Employment Data

- County Populations by Industry
- County Populations by Occupation
- County Populations by Class of Worker
  - County Average Wages 2014
  - County Populations by Commute
- County Unemployment Statistics 2014-2015
  - State Unemployment Map
  - Regional Unemployment Map

[Return to Table of Contents](#)



**Lake of the Ozarks**  
Regional Economic Development Council  
*Quality Life. Quality Business.*

## County Populations by Industry (2000, 2015 ACS 5yr.)

Industry	Camden		Miller		Morgan	
	2000	2014	2000	2015	2000	2015
<b>Agriculture/Forestry/ Fishing/Hunting</b>	298	208	485	292	564	352
<b>Construction</b>	1,918	1,351	1,253	1,015	933	588
<b>Manufacturing</b>	1,634	1,285	1,441	1,108	1,438	934
<b>Wholesale Trade</b>	377	256	225	155	202	110
<b>Retail Trade</b>	2,780	2,887	1,297	2,050	1,041	1,365
<b>Transportation/ Warehousing/Utilities</b>	555	588	578	274	335	313
<b>Information</b>	314	323	162	184	124	78
<b>Finance/Insurance/ Real Estate</b>	1,073	1,166	581	410	390	255
<b>Management/ Administrative/ Waste Management</b>	928	1,426	474	757	348	347
<b>Educational/Health/ Social Services</b>	2,776	3,887	1,624	2,088	1,342	1,247
<b>Entertainment/ Recreation/Food</b>	2,145	2,506	1,274	1,184	589	495
<b>Other Services, except Pub- lic Administration</b>	677	1,098	601	588	413	488
<b>Public Administration</b>	864	801	931	727	483	343

Source: US Census 2000, 2015 ACS 5 yr ('15 Camden not available)



Photo By: Lake of the Ozarks CVB



## County Populations by Occupation

Industry	Camden		Miller		Morgan	
	2000	2014	2000	2015	2000	2015
<b>Management/Professional</b>	4,848	5,424	2,533	2,756	1,888	1,568
<b>Service</b>	2,656	3,906	1,967	2,425	1,326	1,323
<b>Sales/Office</b>	4,787	4533	2,578	2,920	1,990	2,016
<b>Construction/Extraction/ Maintenance</b>	2,233	1729	1,565	1,122	1,113	905
<b>Production/Transportation</b>	2,083	2,190	2,182	1,609	1,723	1,063

Source: US Census 2000, 2015 ACS 5 yr ('15 Camden not available)



Photo By: Lake of the Ozarks CVB

## County Populations by Class of Worker

Industry	Camden		Miller		Morgan	
	2000	2014	2000	2015	2000	2015
<b>Private Wage/Salary</b>	12,278	13,768	7,903	7,993	5,752	5,111
<b>Government</b>	2,076	2,285	1,771	1,722	1,125	917
<b>Self-Employed</b>	1,900	1,691	1,199	1,043	1,279	819
<b>Unpaid Family Workers</b>	85	38	53	74	46	28

Source: US Census 2000, 2015 ACS 5 yr ('15 Camden not available)

## County Average Wages 2015

	2015 Total Wages All Industries, Private Ownership		2015 Total Wages All Industries Public/Private	
	Avg. Annual Wages	Avg. Hourly Wages	Avg. Annual Wages	Avg. Hourly Wages
<b>Camden</b>	\$29,272	\$14.07	\$29,601	\$14.23
<b>Miller</b>	\$30,277	\$14.56	\$30,365	\$14.74
<b>Morgan</b>	\$26,332	\$12.66	\$26,391	\$12.69

Source: Missouri Economic Research and Information Center, Aug. 2016

## County Populations by Employment Status

	Camden		Miller		Morgan	
	2000	2014	2000	2015	2000	2015
<b>16 years &amp; older</b>	30,460	36,553	18,105	19,756	15,230	16,285
<b>In Labor Force</b>	17,158	19,519	11,565	11,803	8,622	7,783
<b>Employed</b>	16,339	17,795	10,926	10,832	8,202	6,875
<b>Unemployed</b>	790	1,724	618	956	414	907
<b>Not in Labor Force</b>	13,302	17,034	6,540	7,953	6,608	8,502

Source: US Census 2000, 2015 ACS 5 yr ('15 Camden not available)

## County Populations by Commute

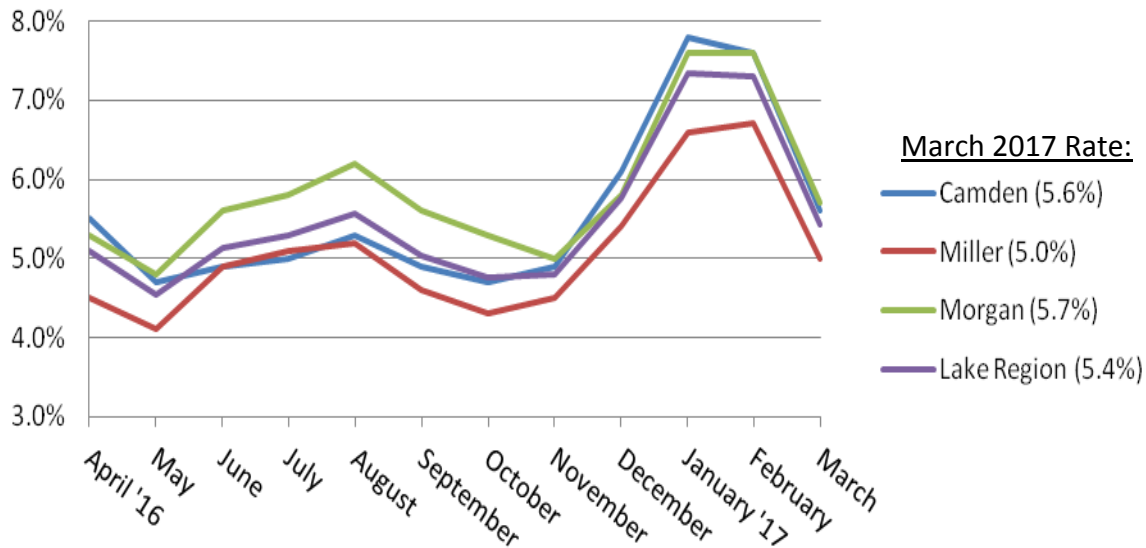
Mode of Transportation	Camden		Miller		Morgan	
	2000	2014	2000	2015	2000	2015
<b>Car, Truck, Van drove alone</b>	12,294	13,880	8,030	8,029	5,648	4,779
<b>Car, Truck, Van carpooled</b>	2,370	2,138	1,854	1,745	1,401	1,033
<b>Public Transport</b>	34	71	20	5	23	15
<b>Walked</b>	364	145	213	142	235	276
<b>Other Means</b>	152	340	100	258	80	304
<b>Worked at Home</b>	861	787	510	457	694	329

Source: US Census 2000, 2014 ACS 5 yr ('15 Camden not available)

# County Labor Statistics 2014-2015

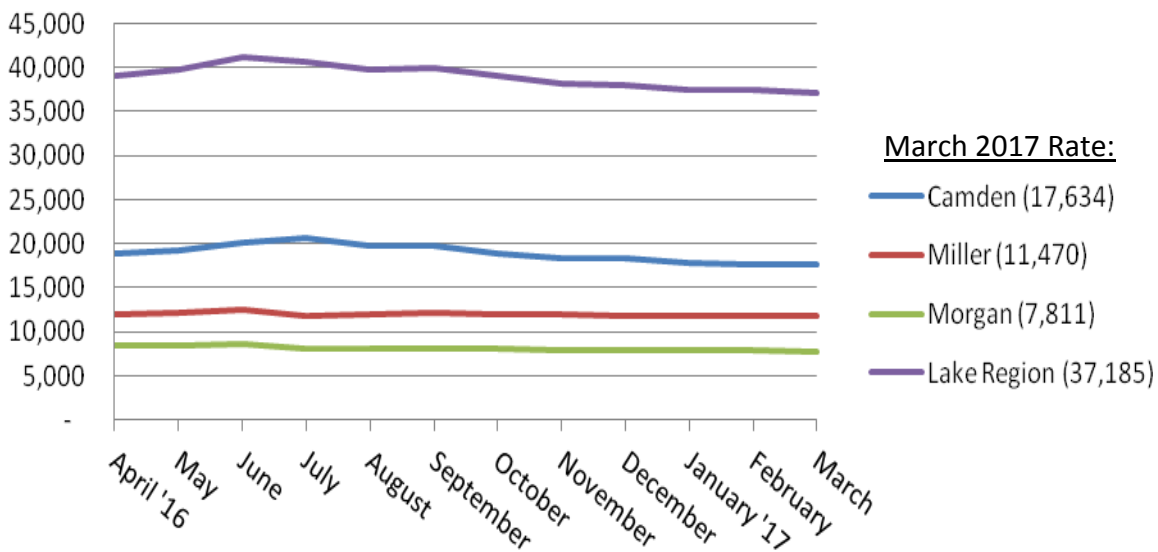
## Lake of the Ozarks Unemployment

April '16 to March '17



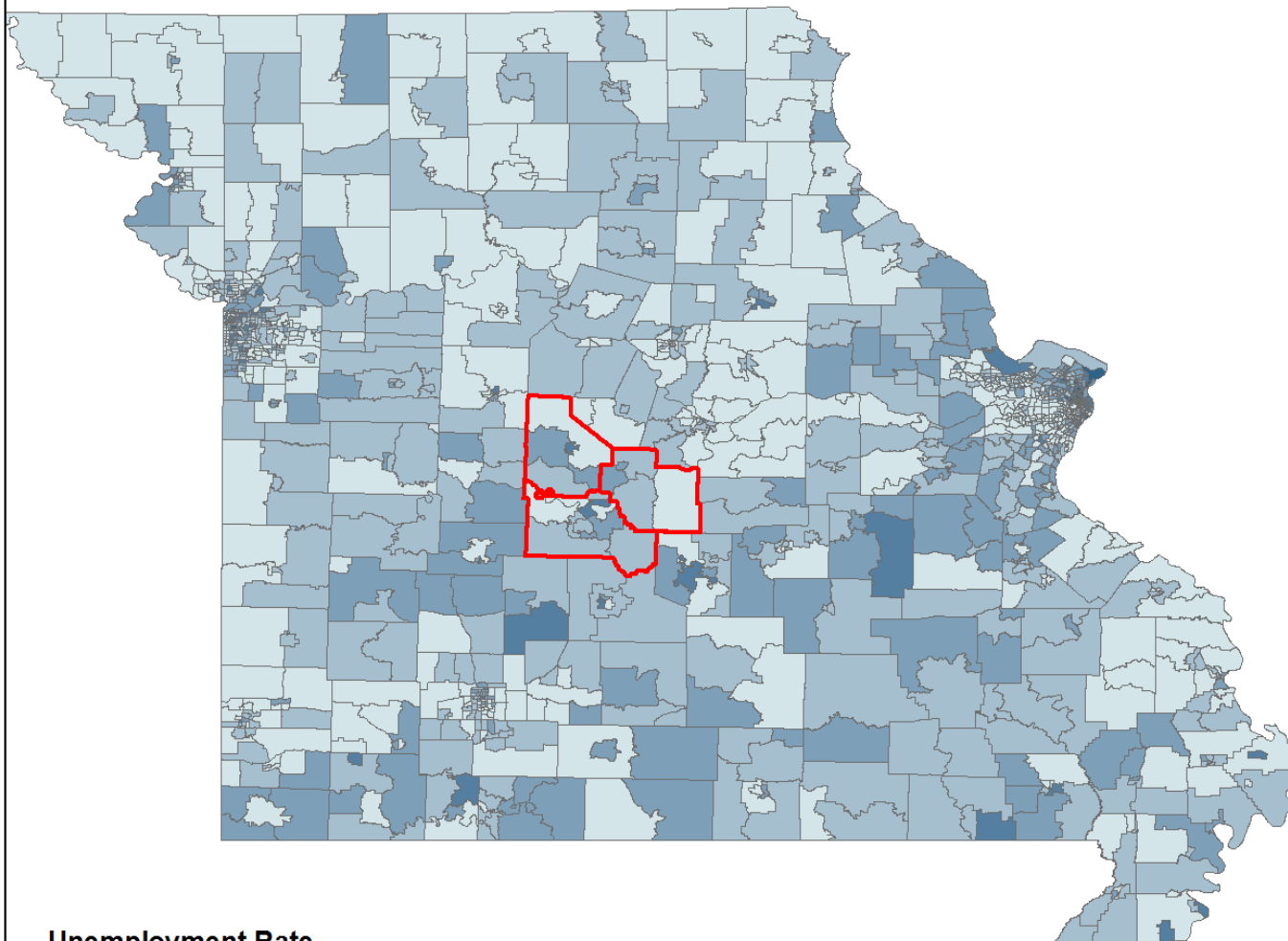
## Lake of the Ozarks Labor Force

April '16 to March '17

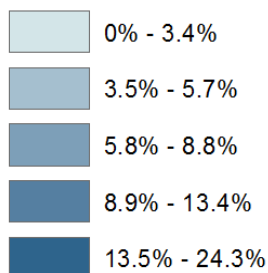


# State of Missouri Unemployment Rates

Census Tracts  
5 Year ACS 2015



## Unemployment Rate

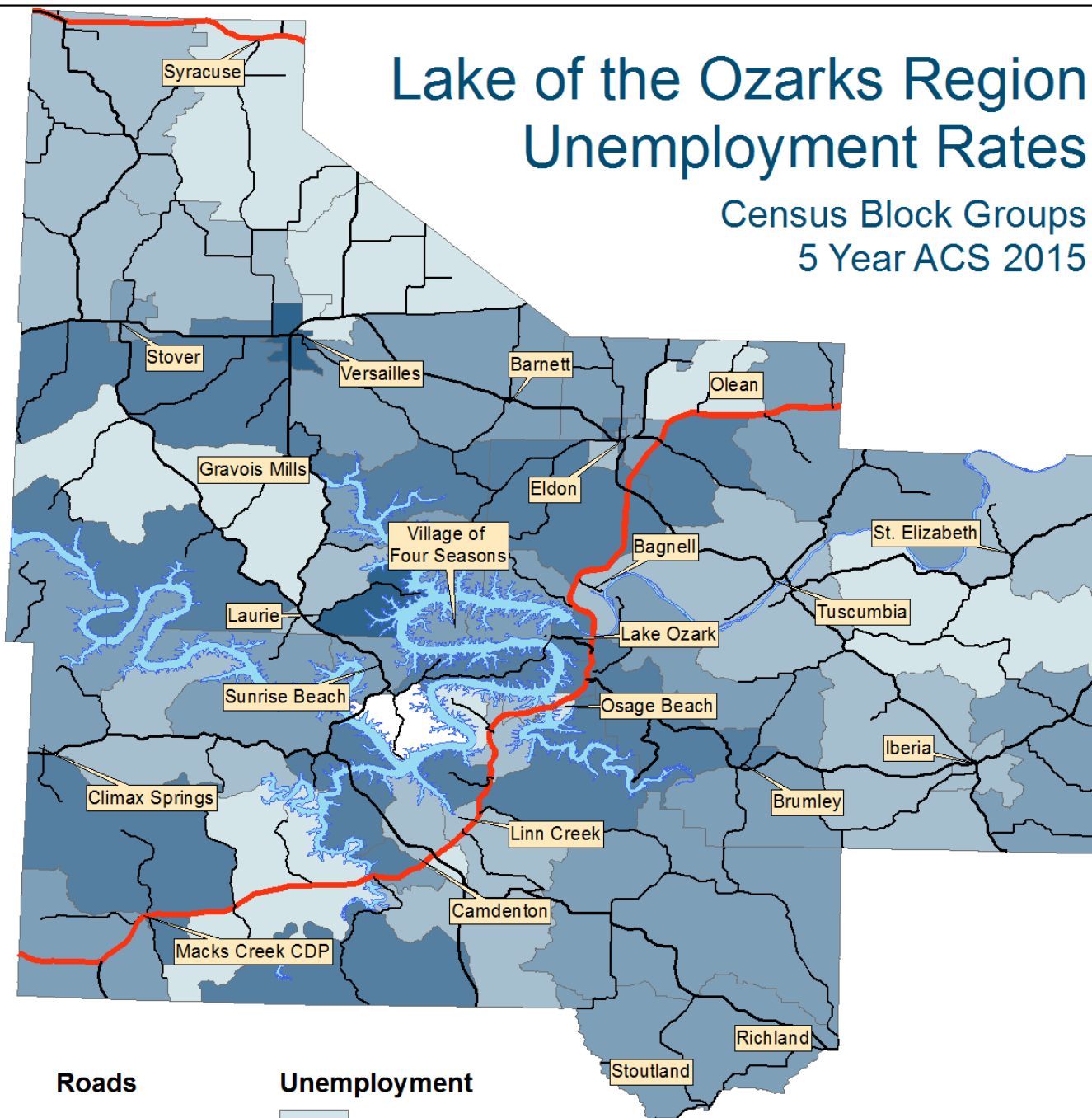


**Lake of the Ozarks**  
Regional Economic Development Council  
Quality Life. Quality Business.

Map by: Taylor Schlueter  
Lake of the Ozarks Council of  
Local Governments  
Source: MSDIS, US Census  
Date: 5/11/2017

# Lake of the Ozarks Region Unemployment Rates

Census Block Groups  
5 Year ACS 2015



Map by: Taylor Schlueter  
Lake of the Ozarks Council of  
Local Governments  
Source: MSDIS, US Census  
Date: 5/11/2017



**Lake of the Ozarks**  
Regional Economic Development Council  
Quality Life. Quality Business.



## Tri-County Major Regional Employers (\* MO's Top 50 Employers 2015)

Employer	Product/Service	Location
Adient	Manufacturing	Miller
Ameren Missouri*	Utility	All Counties
American Home Care	Health Care	Camden
APAC-Missouri Inc	Infrastructure Services	Camden
Big Surf Waterpark	Recreational Services	Camden
Camden County	Government	Camden
Camden on the Lake	Resort/Hotel	Camden
Camdenton R-III School District	Education	Camden
Casey's General Store *	Retail/Services	All Counties
Central Bank	Financial Service	All Counties
Charter Communication *	Infrastructure Services	All Counties
Country Club Hotel & Spa	Resort/Hotel	Camden
Dierbergs Markets*	Retail	Camden
Dollar General *	Retail	All Counties
Eldon School District	Education	Miller
G-2-M Supermarkets	Retail	Morgan
Gates Rubber Company	Manufacturing	Morgan
Gerbes Market & Pharmacy	Retail	Camden
Good Shepherd Nursing	Health Care	Morgan
Home Depot *	Retail	Miller
Hy-Vee *	Retail	Camden
Iberia R-V District	Education	Miller
Innovative Procurement	Manufacturing	Miller
Kohls	Retail	Miller
Lake Regional Health System	Health Care	All Counties
Lowe's *	Retail	Miller
Malone Staffing	Employment	All Counties
Manpower Staffing	Employment	All Counties
Mc Donald's*	Restaurants	Miller
Menards	Retail	Miller
Miller County	Government	Miller



Source: Lake of the Ozarks Council of Local Governments and <http://www.missourieconomy.org/>

## Tri-County Major Regional Employers (\* MO's Top 50 Employers 2015)

Employer	Product/Service	Location
Miller County Nursing Home	Health Care	Miller
Morgan County	Government	Morgan
Morgan County School District	Education	Morgan
Old Kinderhook Golf & Lodge	Resort/Hotel	Camden
Opies, Inc.	Transportation	Miller
O'Reilly's Auto Parts	Retail	All Counties
Panera Bread Company *	Restaurants	Camden
Penmac Staffing *	Employment	All Counties
Premium Outlets	Retail	Camden
Re/Max Lake Of The Ozarks	Real Estate	Miller
Resort Of Port Arrowhead	Resort/Hotel	Miller
School of the Osage R-II	Education	Miller
Speedline Technologies	Manufacturing	Camden
Tan-Tar-A Resort	Resort/Hotel	Camden
Target *	Retail	Camden
The Lodge of Four Seasons	Resort/Hotel	Camden
Topsiders Boat Rental	Recreational Services	Camden
Unilever	Manufacturing	Miller
UPS *	Logistics	All Counties
Vitronics Soltec Inc	Manufacturing	Camden
Walgreens *	Retail	Miller
YMCA *	Recreational Services	Camden
Walmart *	Retail	All Counties

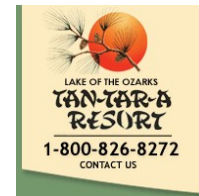


Photo By: Lake of the Ozarks CVB



Photo By: Lake of the Ozarks CVB



## **Taxation Data**

- State of Missouri Tax Rates
- Sales Tax Per County, April 2015
- County Classifications/Assessments 2015
  - County Personal Property Tax Rates
  - County Real Estate Tax Rates
  - Local Sales Tax Receipts
    - TIF District Map
  - Enterprise Zone Map

[Return to Table of Contents](#)



**Lake of the Ozarks**  
Regional Economic Development Council  
*Quality Life. Quality Business.*

## State of Missouri Tax Rates

Corporate Tax Rate: 6.25%

State Sales Tax Rates: 4.225%

Personal Income Tax Rate: 1.5 - 5.5% on income <\$9,000; 6% on income >\$9,000

### Sales Tax Per County, March 2017\*

Camden** 5.475%	Miller 5.225%	Morgan 4.725%
W/Ambulance District** 5.975%	W/Ambulance District 5.725%	W/Ambulance District 5.725%



Photo By: Camdenton Area Chamber of Commerce

### Sales Tax Per City, March 2017\*

Camden		Miller		Morgan	
Camdenton	7.475%	Bagnell	6.225%	Barnett	5.725%
Lake Ozark**	8.225%	Brumley	6.725%	Gravois Mills	7.225%
Laurie	7.725%	Eldon	8.125%	Laurie	7.725%
Linn Creek	8.725%	Iberia	7.725%	Rocky Mount	5.725%
Osage Beach**	7.475%	Lake Ozark**	7.975%	Stover	7.225%
Richland	8.475%	Osage Beach	7.725%	Sunrise Beach	7.725%
Stoutland	6.475%	St. Elizabeth	6.725%	Syracuse	5.725%
Sunrise Beach**	7.975%	Tuscumbia	6.725%	Versailles	7.725%
Village of Four Seasons**	6.975%				

Source: <http://dor.mo.gov/pdf/localsales.pdf> , <http://dor.mo.gov/pdf/rates/2015/apr2015.pdf>

\*Includes State tax rate of 4.225%

\*\* Higher rates within various CIDs and TDDs



## County Classifications/Assessments 2016

	Camden	Miller	Morgan
County Seat	Camdenton 65020	Tuscumbia 65082	Versailles 65084
Classification	First Class	Third Class	Third Class
Assessed Valuation	\$1,640,978,410	\$422,845,053	\$498,220,754
Square Miles	641	593	594

## County Personal Property Tax Rates

	Camden	Miller	Morgan
Personal Property: % on \$100 Appraised Value	33 1/3	33 1/3	33 1/3
Farm Machinery: % on \$100 Appraised Value	12	12	12



Photo By: Camdenton Area Chamber of Commerce

## County Real Estate Tax Rates

	Camden	Miller	Morgan
Commercial: % of Appraised Value	32	32	32
Residential: % of Appraised Value	19	19	19
Agriculture: % of Appraised Value	12	12	12

# Local Sales Tax Receipts

(In dollars)

City	2016
Camdenton	167,869,086.79
Eldon	84,024,329.96
Lake Ozark	110,878,289.03
Osage Beach	486,482,584.56
Versailles	67,580,435.12



City	2015	2014	2013	2012
Camdenton	156,500,562.50	151,095,525	148,054,280	144,628,117
Eldon	78,358,969.76	85,900,121	86,120,466	82,931,772
Lake Ozark	104,424,317.71	137,122,062	95,879,469	86,792,893
Osage Beach	479,280,683.88	468,246,096	455,089,892	449,384,817
Versailles	63,279,369.31	62,449,024	60,376,116	58,629,524

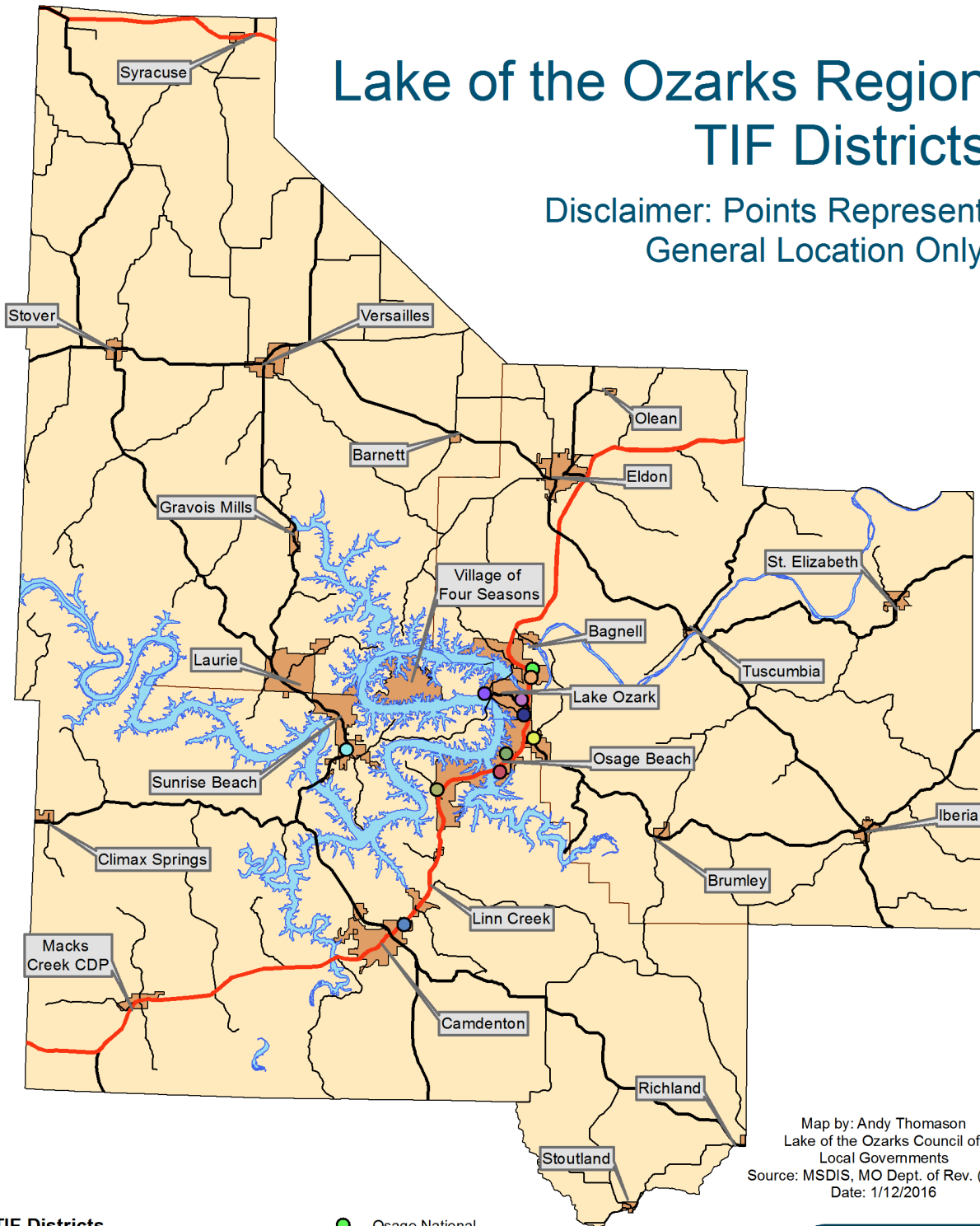
City	2011	2010	2009	2008
Camdenton	140,106,717	137,501,929	140,199,707	142,873,355
Eldon	85,383,318	83,866,052	82,603,191	87,128,709
Lake Ozark	54,600,931	52,134,700	51,847,572	57,751,337
Osage Beach	442,456,889	435,620,458	438,065,306	458,992,271
Versailles	55,126,629	55,090,741	55,536,898	59,164,387

Source: Missouri Department of Revenue Taxable Sales Report



# Lake of the Ozarks Region TIF Districts

Disclaimer: Points Represent  
General Location Only



## TIF Districts

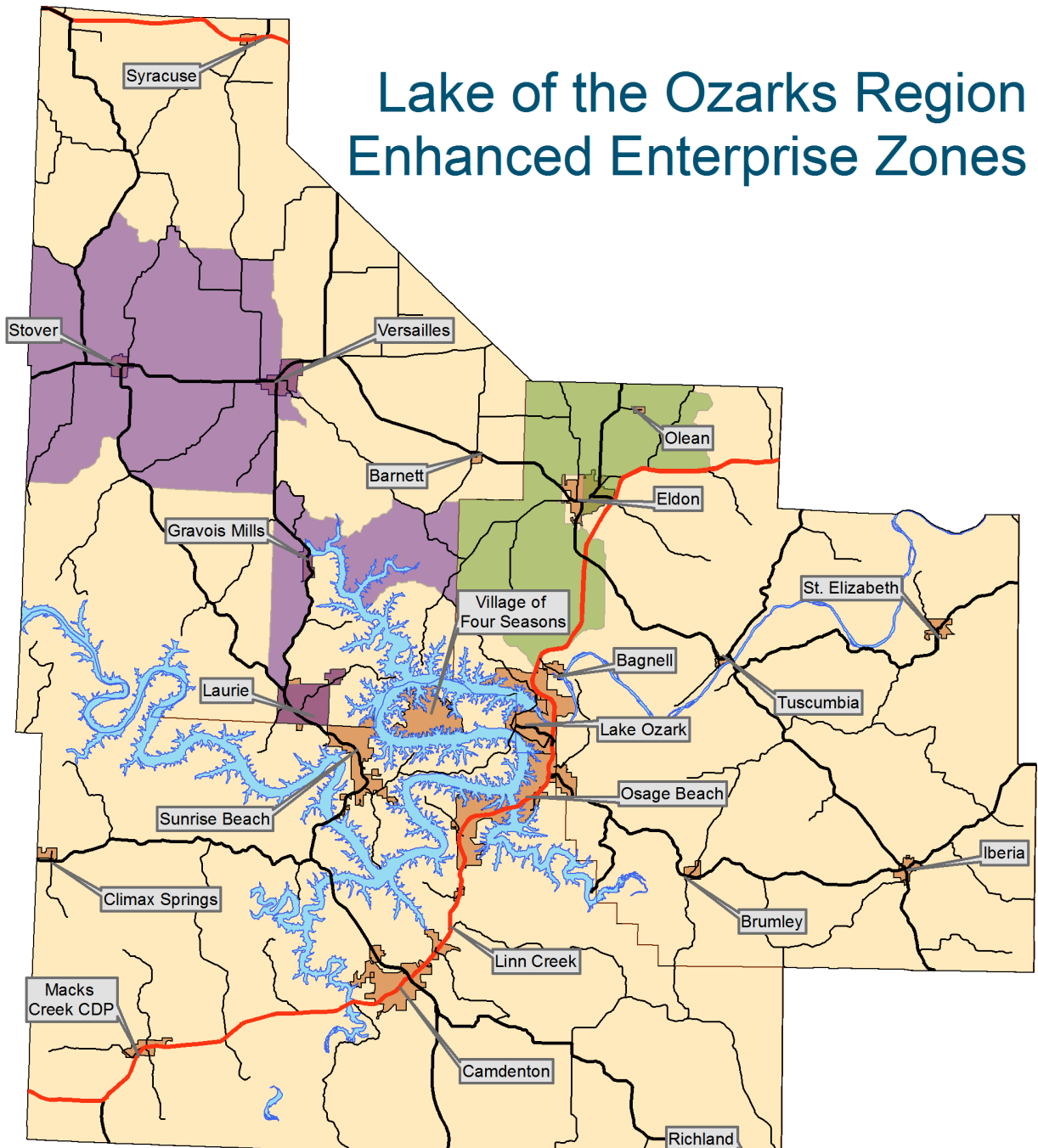
- |                                       |  |
|---------------------------------------|--|
| ● Arrowhead Centre                    | ● Osage National                           |
| ● Dierbergs Osage Beach Redevelopment | ● Osage National Retail                    |
| ● Horseshoe Bend                      | ● Prewitt's Highway 54 Enterprises         |
| ● Marina View Redevelopment           | ● Sunrise Beach Market Center              |
| ● Oak Ridge Landing                   | ● The Briscoe's                            |
|                                       | ● US Highway 54 and Business US Highway 54 |

Map by: Andy Thomason  
Lake of the Ozarks Council of  
Local Governments  
Source: MSDIS, MO Dept. of Rev. (2014)  
Date: 1/12/2016



**Lake of the Ozarks**  
Regional Economic Development Council  
Quality Life. Quality Business.

# Lake of the Ozarks Region Enhanced Enterprise Zones



## Roads

- Business Route
- State Numbered Highway
- State Lettered Highway
- US Highway

## Enhanced Enterprise Zones

- Miller County EEZ
- Morgan County EEZ

Map by: Andy Thomason  
Lake of the Ozarks Council of  
Local Governments  
Source: MSDIS  
Date: 5/12/2015



**Lake of the Ozarks**  
Regional Economic Development Council  
Quality Life. Quality Business.

## **Transportation and Logistics Data**

- County Major Roadways
- County Traffic Count 2015
- Traffic Volumes Map 2015
- Transportation - Major Airport
- County Area Transportation - Local/Regional Airports (within 100 miles)
  - Airport Locations Map
  - Active Rail Lines Map
  - Railroads/Railways
- Commercial Traffic Volume Map
- Missouri Transportation - Bus /Taxi Transportation
- County Area Transportation - Major Freight Carriers
- County Area Transportation - Local/Regional Freight Carriers

[Return to Table of Contents](#)



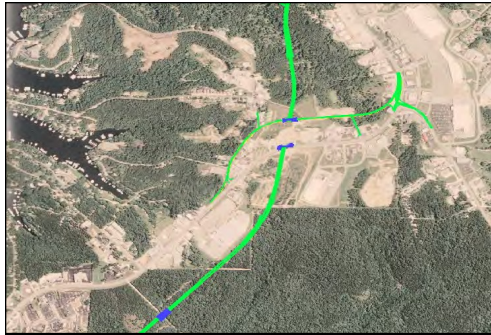
**Lake of the Ozarks**  
Regional Economic Development Council  
*Quality Life. Quality Business.*



## County Major Roadways

Camden	Miller	Morgan
US 54 Missouri 5 Missouri 7	US 54 Missouri 17 Missouri 42 Missouri 52 Missouri 87 Missouri 242	US 50 Missouri 5 Missouri 52 Missouri 135

Source: <http://www.modot.org/newsandinfo/CountyMaps.htm>

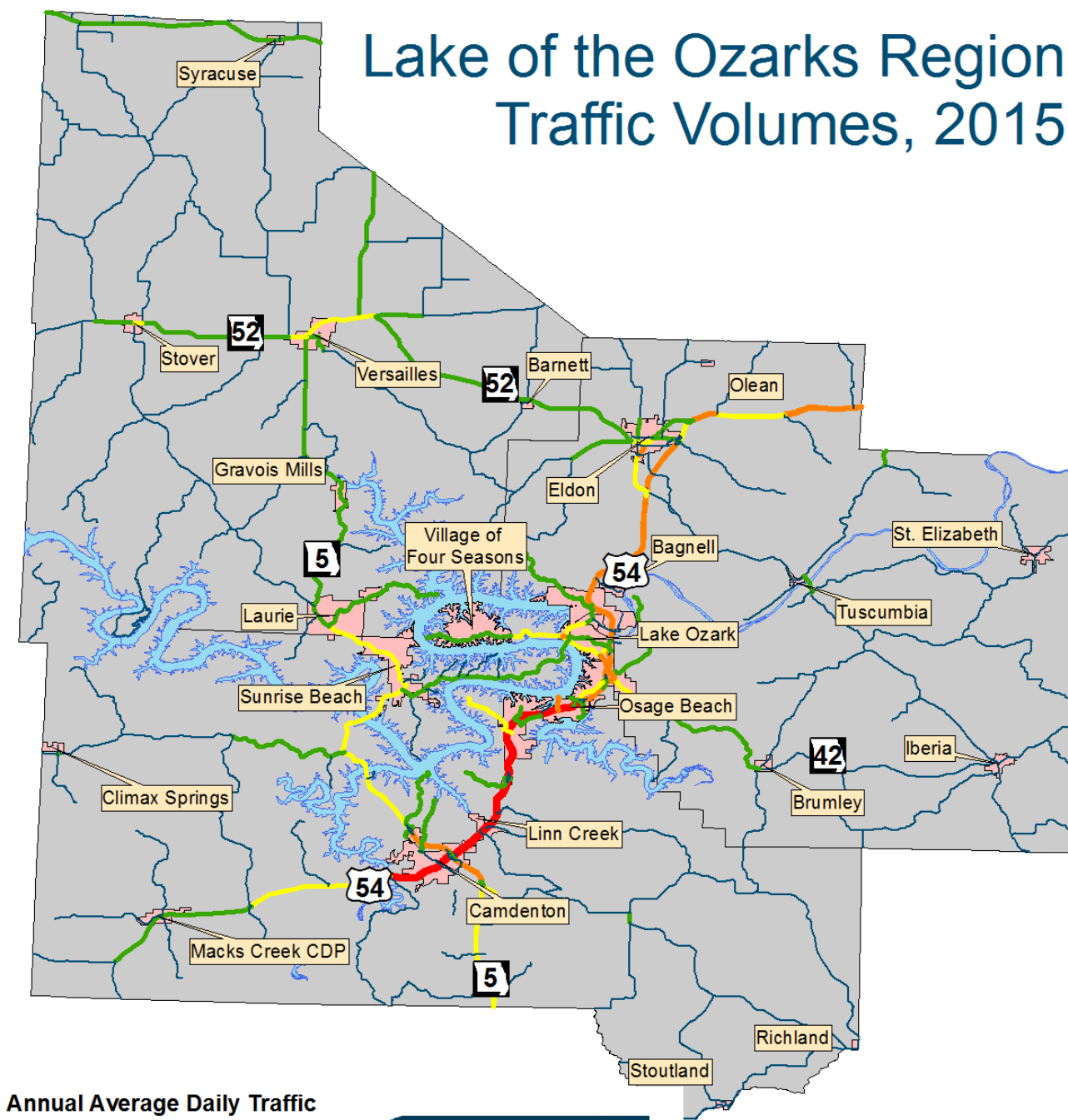


## County Traffic Count 2014

County	Intersection/Location	Traffic Count
Camden/Miller (Osage Beach/Lake Ozark area)	US-54/Nichols Rd, north of intersection	US 54 6,213,000 (Daily Avg. 17,022)
Camden (Linn Creek area)	US-54/MO-V	US 54 5,324,300 (Daily Avg. 14,587)
Miller (Eldon area)	US-54/Business 54, south of Eldon	US 54 3,354,400 (Daily Avg. 9,190)
Morgan (Versailles area)	MO-52/MO-5	MO 52/5 1,289,500 (Daily Avg. 3,533)
Morgan (Laurie area)	MO-5/MO-135	MO 5 828,600 (Daily Avg. 2,270)
		MO-135 316,100 (Daily Avg. 866)

Source: MoDOT GIS data, 2014

# Lake of the Ozarks Region Traffic Volumes, 2015



## Annual Average Daily Traffic

- 24 - 2,650
- 2,651 - 6,500
- 6,500 - 12,600
- 12,601 - 21,000
- 21,000 - 34,324



**Lake of the Ozarks**  
Regional Economic Development Council  
Quality Life. Quality Business.

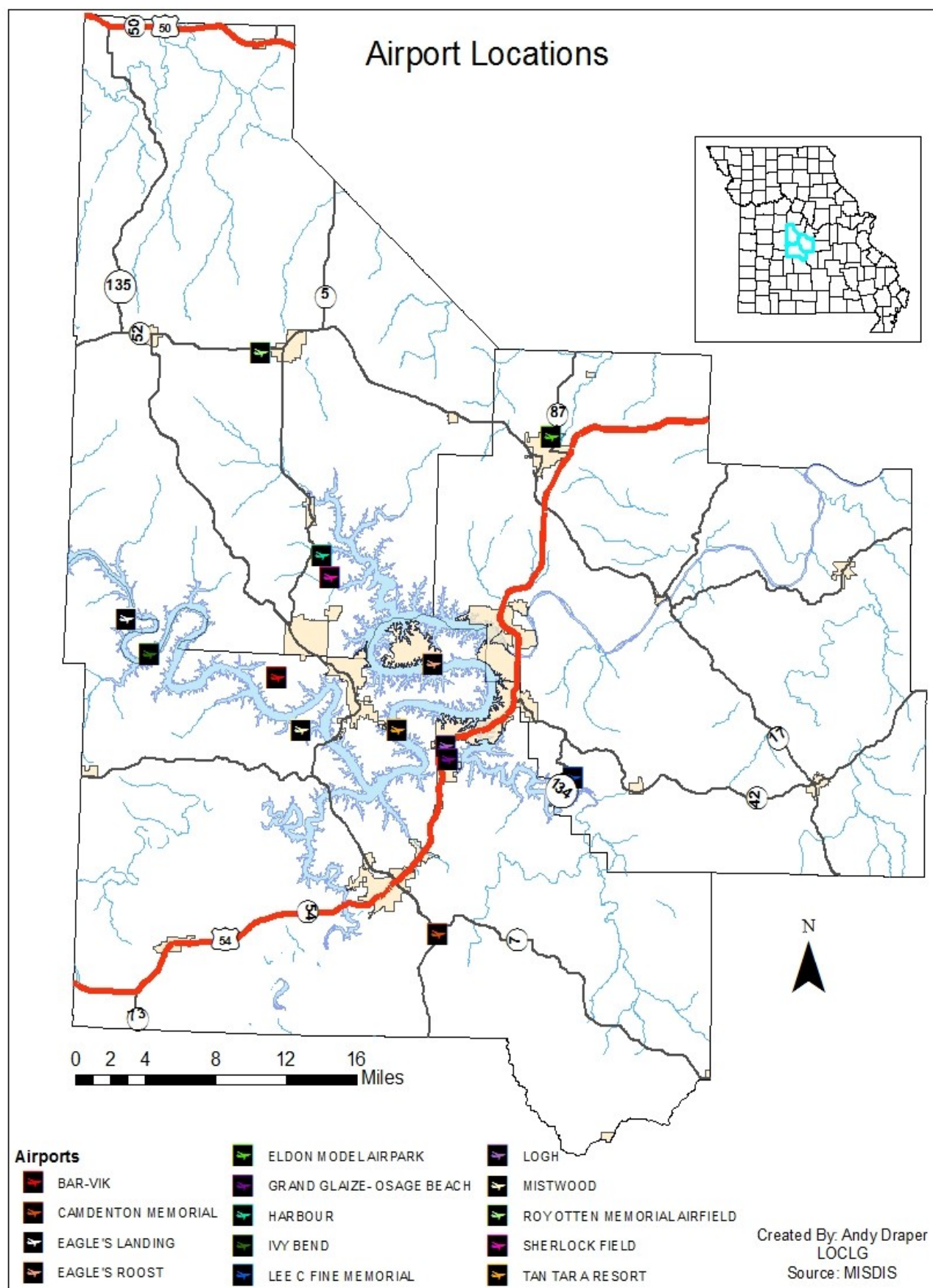
Map by: Taylor Schlueter  
Lake of the Ozarks Council of  
Local Governments  
Source: MSDIS, MoDOT  
Date: 5/11/2017

## Transportation - Major Airports

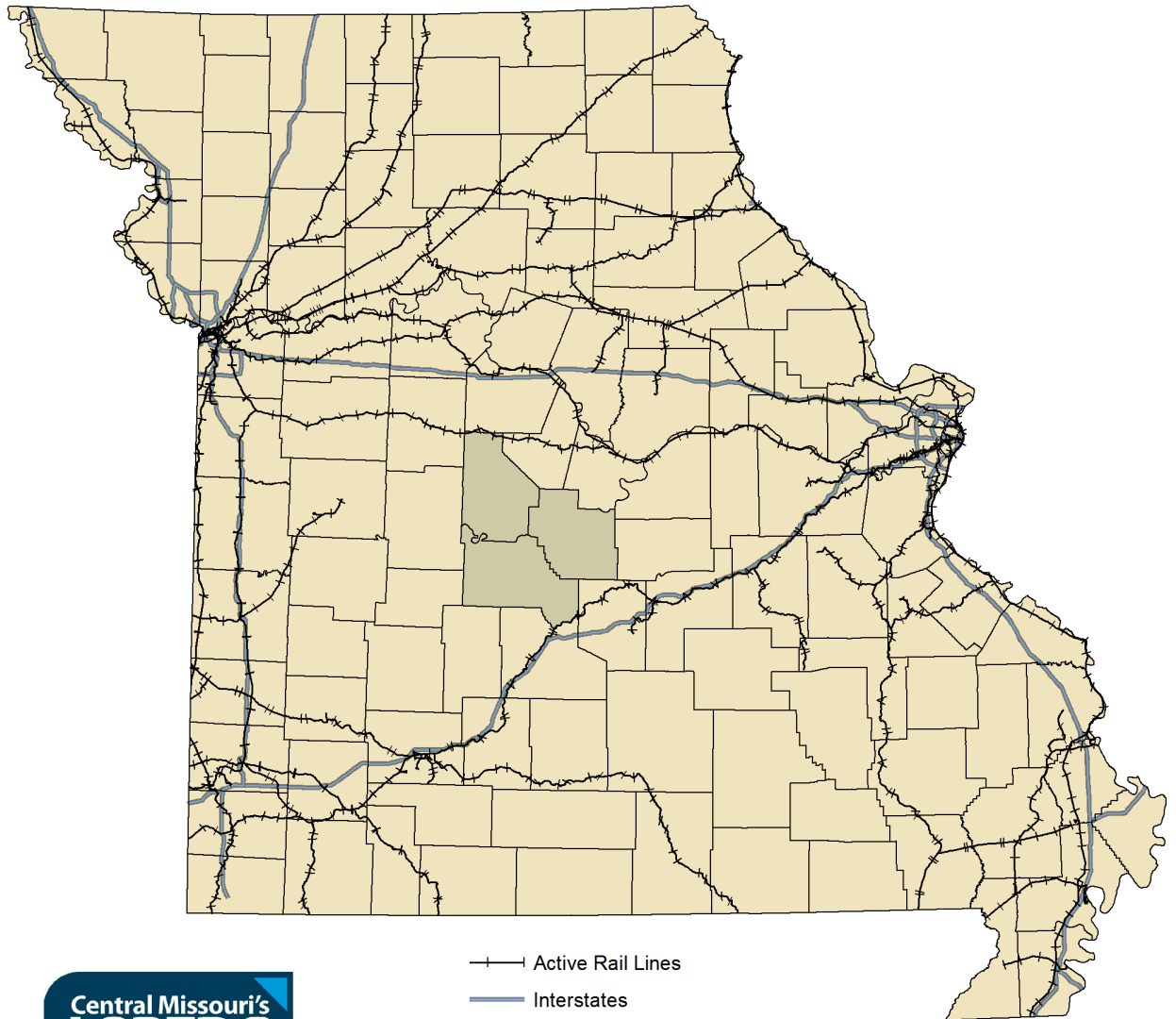
Columbia Regional Airport (COU) Columbia, MO 65201	Springfield-Branson National Airport (SGF) Springfield, MO 65802
Kansas City International Airport (MCI) Kansas City, MO 64153	Lambert-St. Louis International Airport (STL) St. Louis, MO 63145
Branson Airport (BKG) Hollister, MO 65672	Waynesville Regional Airport (TBN) Ft. Leonard Wood, MO 65473

## County Area Transportation - Local/Regional Airports (within 100 miles)

City/Location	Airport/Airline	Code
Bolivar	Bolivar Municipal	M17
Boonville	Jesse Viertel Memorial	VER
Buffalo	Buffalo Municipal	H17
Camdenton	Camdenton Memorial- Lake Regional	OZS
Dearborn	Triple R	OC1
Eldon	Eldon Model Airpark	H79
Fulton	Elton Hensley Memorial	FTT
Jefferson City	Jefferson City Memorial	JEF
Kaiser/Lake Ozark	Lee C Fine Memorial	AIZ
Lebanon	Floyd W Jones	LBO
Linn	Linn State Technical College	1H3
Mansfield	Mansfield Municipal	O3B
Mexico	Mexico Municipal	MYJ
Osage Beach	Grand Glaize	K15
Osceola	Osceola Municipal	3MO
Richland	Richland Municipal	MO1
Rolla	Rolla Downtown	K07
Rolla/Vichy	Rolla National	VIH
Sedalia	Sedalia Memorial	DMO
Seymour	Owen Field	H58
Springfield	Springfield Downtown	3DW
Springfield	Flying Bar H	MO2
Stockton	Stockton Municipal	MO3
Versailles	Roy Otten Memorial	3VS
Warsaw	Warsaw Municipal	RAW
Waynesville	Waynesville St. Robert Regional	TBN



## State of Missouri, Active Rail Lines



Map by: Andy Thomason  
Lake of the Ozarks Council of  
Local Governments  
Source: MSDIS, MoDOT  
Date: 1/12/2015



# Railroads/Railways

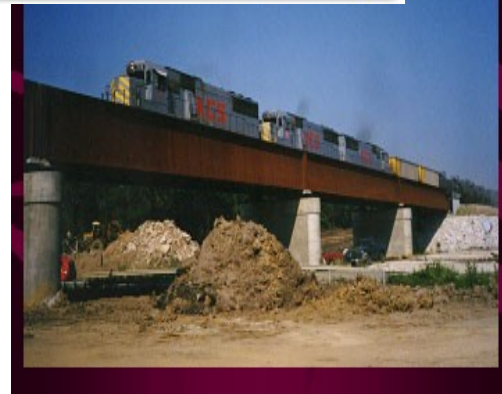
## 19 Railroads State of Missouri

### Classifications

Class I	National Railroads
Regionals	Two/Three States
Terminals	Metropolitan Areas
Shortlines	Regional Inside State Lines
Tourists	Short Trip/Passengers
Amtrak	National Inter-City Passenger

Source: <http://missouriruralpublictransportation.org/othertransportation/rail/freight.htm>

Code	Railroad/Railway
AM	Arkansas & Missouri Railroad
BGKX	Belton-Grandview Railway
BSR	Branson Scenic Railway
BNSF	BNSF Railway
CMR	Central Midland Railway
CBRM	Chillicothe-Brunswick/MO North Central
COLT	Columbia Terminal Railroad
DM&E	Dakota, Minnesota & Eastern Railroad
KCS	Kansas City Southern Railway
KCT	Kansas City Terminal Railway
MRS	Manufacturers' Railway
MNA	Missouri & Northern Arkansas Railroad
MVP	Missouri Valley Park Switching
NS	Norfolk Southern Railway
SLIM	St. Louis Iron Mountain Railroad
SE	SEMO Port Railroad
TRRA	Terminal Railroad Assoc. of St. Louis
UP	Union Pacific Railroad

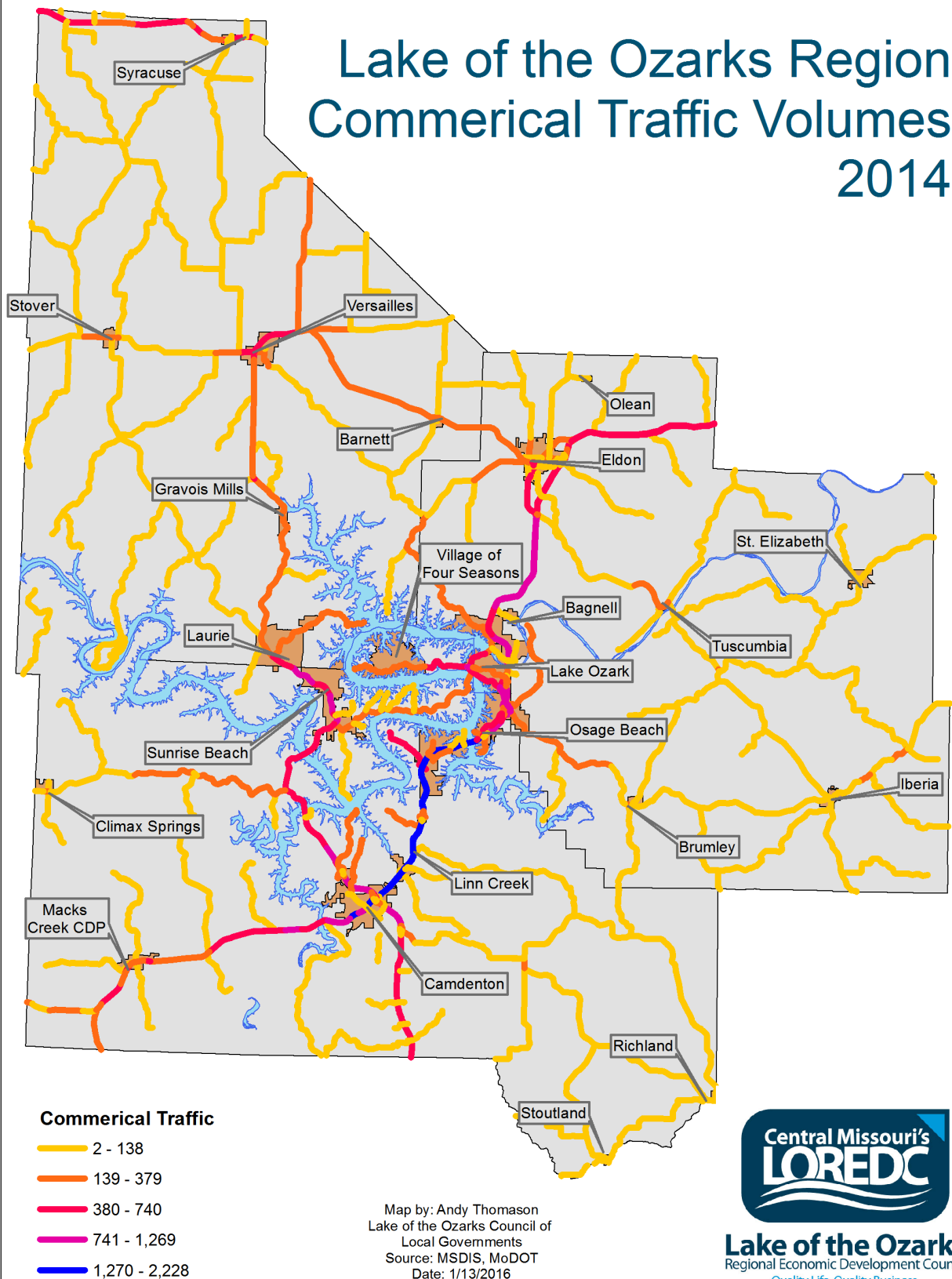


### Amtrak Terminals

Hermann, MO  
Independence, MO  
Jefferson City, MO  
Kansas City, MO  
Kirkwood, MO  
La Plata, MO  
Lee's Summit, MO  
Poplar Bluff, MO  
Sedalia, MO  
St. Louis, MO  
Warrensburg, MO  
Washington, MO

Source: <http://www.amtrak.com/midwest-train-bus-stations>

## Lake of the Ozarks Region Commerical Traffic Volumes 2014



## Missouri Transportation - Bus /Taxi Transportation

Busline/Taxi	Location
Buddy's Transportation	Lake Ozark
Prompt Charters & Tours	Lake Ozark
Greyhound	Lebanon St. Robert
D&K Bus	Jefferson City
Missouri Public Transit	Jefferson City
Jefftran	Jefferson City
Oats	Columbia
Maxi Taxi	Kaiser
365-Cabs	Lake Ozark Area
Lake Ozark Casual Cab	Lake Ozark Area
Mr. Taxi	Kaiser
All American Cab Co.	Osage Beach
Yellow Cab	St. Robert

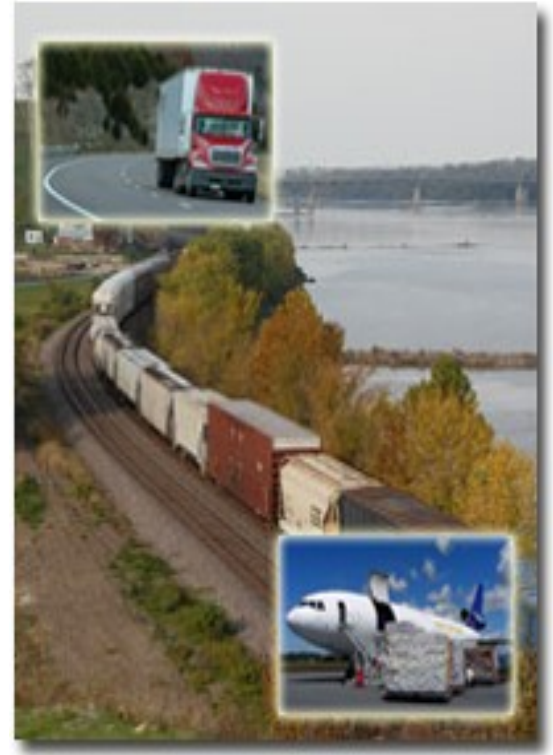


## County Area Transportation - Major Freight Carriers

Carrier	Location
UPS	Lake Ozark Camdenton
FedEx	Osage Beach
DHL	Serving Lake Area
Ryder System	Serving Lake Area
Penske	Serving Lake Area
JB Hunt	Serving Lake Area
Swift Transportation	Serving Lake Area
Landstar System	Serving Lake Area
Werner	Serving Lake Area
Pacer International	Serving Lake Area
US Xpress	Serving Lake Area
Old Dominion	Serving Lake Area
Saia	Serving Lake Area

## County Area Transportation - Local/Regional Freight Carriers

Carrier	Location
Eldon Freightways	Serving Lake Area
Sureway Transportation	Serving Lake Area
Online Freight	Serving Lake Area
Bisges Trucking	Serving Lake Area
Opies Trucking	Serving Lake Area
Elegant Transport	Serving Lake Area
Central Area Transportation	Serving Lake Area
Katschman Trucking	Serving Lake Area
ZP Trucking	Serving Lake Area
Posey Auto Transporters	Serving Lake Area
RoadRunner Auto Transport	Serving Lake Area
Suncoast Auto Transport	Serving Lake Area
AAA Anytime	Serving Lake Area
UHaul	Serving Lake Area



# Utilities and Telecommunications Data

- County Population/Projections
- City Populations & Estimates
  - County Population by Age
- County Populations by Race & Ethnicity
  - County Housing
- County Populations by Employment Status
  - Population Density

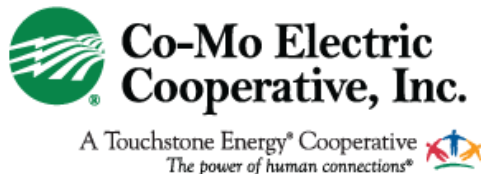
[Return to Table of Contents](#)



**Lake of the Ozarks**  
Regional Economic Development Council  
*Quality Life. Quality Business.*



## County Area Utilities - Electric & Natural Gas



### County Area Electric

Company	Location
Ameren Missouri	Eldon Lake Ozark Linn Creek Osage Beach Versailles
Co-Mo Electric Cooperative	Gravois Mills Laurie Sunrise Beach
Gasconade Electric Co-Op	Iberia
Laclede Electric Co-Op	Camdenton
Three Rivers Electric Co-Op	Eldon
Southwest Electric Co-Op	Roach

### County Area Natural Gas

Company	Location
Ameren Natural Gas	Miller and Morgan Counties
Summit Natural Gas	Camden, Miller, Morgan Counties



## County Area Utilities - Public Water & Wastewater

### County Area Water

Company	Location
Public Water Supply Dist.2	Camdenton
Public Water Supply Dist 1	Macks Creek
Crocker Public Water Suply	Crocker
Public Water Supply	Camdenton
Ozark Shores Water	Lake Ozark
American Water Works	Eldon
Lake Region Water & Sewer	Sunrise Beach
Laclede Co. Water Dist	Stoutland

### Municipal Wastewater Systems

City	County	Design MGD
Barnett	Morgan	0.022
Camdenton	Camden	0.640
Eldon	Miller	1.000
Iberia	Miller	0.150
Lake Ozark/ Osage Beach	Miller, Camden	3.000
Laurie	Morgan	0.250
Linn Creek	Camden	0.046
St. Elizabeth	Miller	0.036
Stover	Morgan	0.073 0.120
Sunrise Beach	Camden	0.050
Versailles	Morgan	0.550



### County Public Water Districts

Camden County
Public Water District I
Public Water District II
Public Water District III
Public Water District IV
Public Water District V

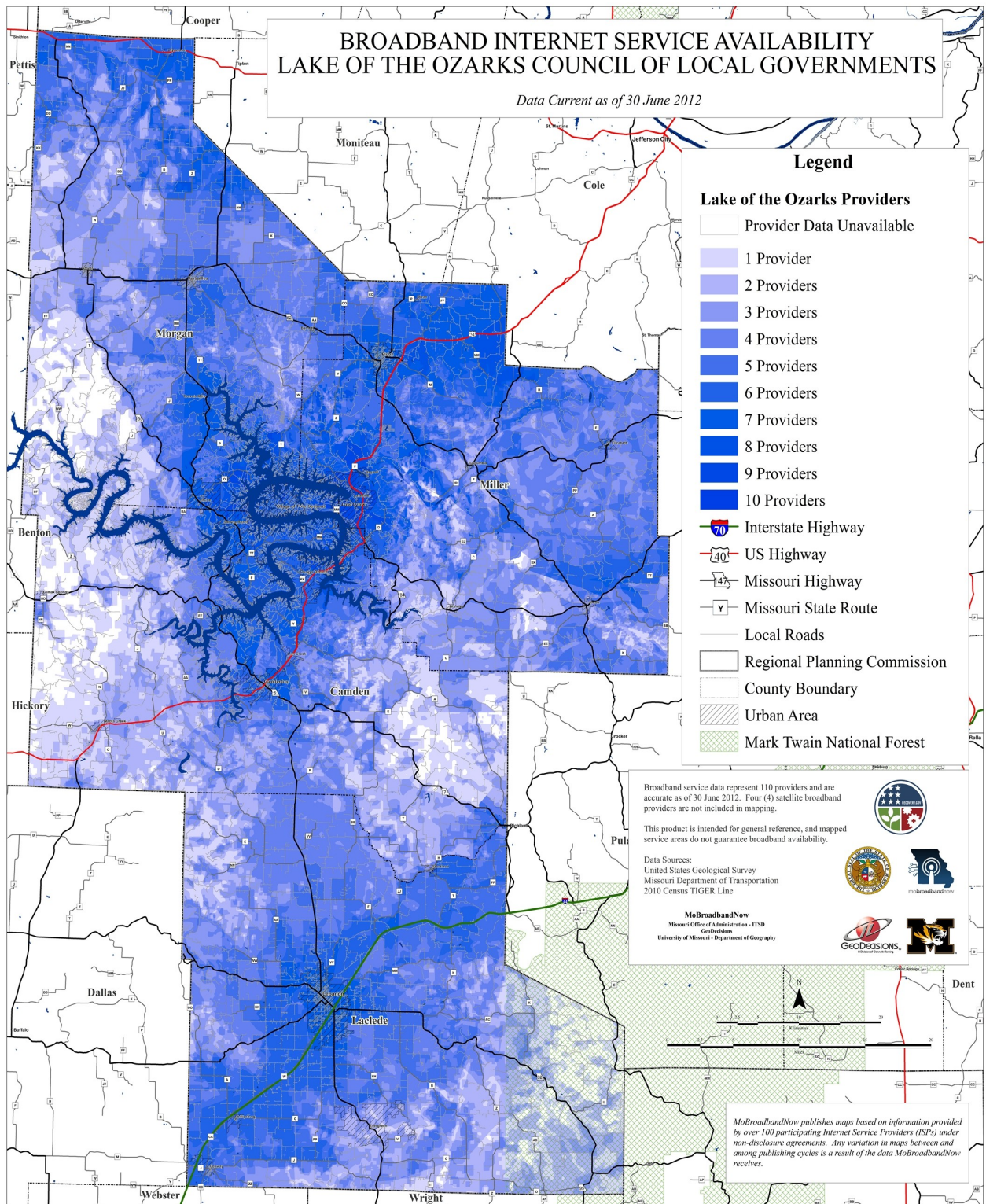
### City Water Systems

City	County
Barnett	Morgan
Camdenton	Camden
Eldon	Miller
Iberia	Miller
Lake Ozark	Miller, Camden
Laurie	Morgan
Linn Creek	Camden
Osage Beach (East)	Camden
Osage Beach (West)	Camden
St. Elizabeth	Miller
Stover	Morgan
Sunrise Beach	Camden
Versailles	Morgan



Photo: Osage Beach/Lake Ozark Joint Sewer Plant





## Broadband Service Provides

Service Providers	Provider DBA Name
AT&T Communications of Texas Inc.	AT&T Southwest
AT&T Mobility LLC	AT&T Mobility LLC
CableAmerica	Cable America Missouri LLC
Cellco Partnership	Verizon Wireless
CenturyTel Inc.	CenturyLink
Charter Communications	Charter Communications
Co-Mo Comm Inc.	Co-Mo Connect
Deutsche Telekom AG	T-Mobile
Fidelity Communications Company	Fidelity Cablevision Inc.
Hughes Communications Inc.	Hughes Network Systems LLC
Imagination Inc.	Iland Internet Services LLC
Otelco Inc.	Otelco Mid-Missouri LLC
Radio Wire Inc.	Radio Wire Inc.
Skycasters	Skycasters
Sprint Nextel Corporation	Sprint
StarBand Communications Inc.	StarBand Communications Inc.
The Stoutland Telephone Company	TDS Telecom
Total Highspeed Internet Service	Total Highspeed Internet Service
United States Cellular Corporation	U.S. Cellular
ViaSat Inc.	WildBlue Communications Inc.
Video Direct Satellite & Entertainment	Video Direct
Windstream Corporation	Windstream Corporation
Wireless Investments LLC	Easy Net
YHTI Inc.	YHTI

Source: <http://www.loclg.org/reportsstudies.htm>

## County Media - Newspaper/Magazine Publications/Online

Publication/Web	Media Type	Location
Lake Sun	Publication	Eldon, Osage Beach
Lake Today	Publication	Lake Ozark
LO Profile	Publication	Lake Ozark
Focus	Publication	Camdenton, Eldon, Osage Beach
Lake Lifestyles	Publication	Camdenton, Eldon, Osage Beach
Lake of the Ozarks Official Vacation & Service Guide	Publication/Web	Camdenton, Eldon, Lake Ozark, Osage Beach
Lake of the Ozarks Restaurant Guide	Publication/Web	Camdenton, Eldon, Lake Ozark, Osage Beach
Vacation News	Publication/Web	Camdenton, Eldon, Osage Beach
Lake Media	Publication/Web	Camdenton, Eldon
Reporter	Publication	Camdenton
Weekly Standard	Publication	Camdenton, Eldon, Osage Beach
Ozark Freebee	Publication	Camdenton
TheLakeOnline	Web	Camdenton
Lakenewsonline	Web	Eldon
Westside Star	Publication	Camdenton, Eldon, Osage Beach
Lake of the Ozarks Real Estate	Publication/Web	Camdenton
Tube Tab	Publication	Camdenton, Eldon, Osage Beach
Boats	Publication	Camdenton, Eldon, Osage Beach
Advertiser	Publication	Eldon
Pennysaver	Publication	Camdenton, Eldon, Osage Beach
Shophelake	Web	Osage Beach



## County Communications Television Stations

Station	Location
KMIZ (Channel 2) ABC	Columbia
KYTV (Channel 3) NBC	Springfield
KMOS (Channel 6) PBS	Warrensburg
KOMU (Channel 7/8) NBC	Columbia
KSPR (Channel 8) ABC	Springfield
KOLR (Channel 10) CBS	Springfield
KFSX (Channel 11) FOX	Springfield
KRCG (Channel 13) CBS	Jefferson City
Video Productions (Channel 32) IND	Osage Beach
KRBK (Channel 49) FOX	Eldridge Lake Ozark
Lake TV 32	Osage Beach
Charter Communications	Osage Beach



Photo By: Lake of the Ozarks CVB



Photo By: Lake of the Ozarks CVB

## County Communications Radio Stations

Station	Broadcast Mode	Format	Location
KBNN	750 AM	Business/News	Lebanon
KRMS	1150 AM	News/Talk	Osage Beach
KLIK (Bott)	1240 AM	News/Talk	Jefferson City
KCRL (Bott)	90.3 FM	Christian News/Info.	Gravois Mills
KCVO	91.7 FM	Christian Contemporary	Camdenton
KLOZ	92.7 FM	Adult Contemporary	Kaiser
KRMS	93.5 FM	Rock	Osage Beach
KTKS	95.1 FM	Country	Versailles
KCMQ	96.7 FM	Rock	Columbia
KJMO	97.7 FM	Classic Rock	Jefferson City
KCLR	99.3 FM	Country	Jefferson City
KZWV	101.9 FM	Light Favorites	Osage Beach
KQUL	102.7 FM	Oldies	Kaiser
KJEL	103.7 FM	Adult Contemporary	Lebanon
KTXV	106.9 FM	Top 40	Columbia
KCLQ	107.9 FM	Country	Camdenton
Zimmer Broadcast			Columbia
Bene Broadcast			Osage Beach



Photo By: Lake of the Ozarks CVB

## Lake Area Information

- Area Chambers of Commerce
- Legislative Representatives – Federal
- Legislative Representatives – State

[Return to Table of Contents](#)



**Lake of the Ozarks**  
Regional Economic Development Council  
Quality Life. Quality Business.



### Eldon Area Chamber of Commerce

203 East 1<sup>st</sup> Street  
Eldon, MO 65020  
573-392-3752

[www.eldonchamber.com](http://www.eldonchamber.com)



### Camdenton Area Chamber of Commerce

739 U.S. Highway 54  
Camdenton, MO 65020  
573-346-2227

[www.camdentonchamber.com](http://www.camdentonchamber.com)



### Lake Area Chamber of Commerce

1 Willmore Lane  
Lake Ozark, MO 65049  
573-964-1008

[www.lakeareachamber.com](http://www.lakeareachamber.com)



### Lake West Chamber of Commerce

125 Oddo Drive  
Sunrise Beach, MO 65079  
573-374-5500

[www.lakewestchamber.com](http://www.lakewestchamber.com)



### Versailles Area Chamber of Commerce

109 N. Monroe  
Versailles, MO 65084  
573-378-4401

[www.versailleschamber.com](http://www.versailleschamber.com)



## Legislative Representatives – Federal



### **Roy Blunt-Senator**

2740-B East Sunshine  
Springfield, MO 65804  
417-877-7814

[www.blunt.senate.gov](http://www.blunt.senate.gov)



### **Claire McCaskill-Senator**

324 Park Central West, Suite 101  
Springfield, MO 65806  
417-868-8745

[www.mccaskill.senate.gov](http://www.mccaskill.senate.gov)



### **Blaine Luetkemeyer-Congressman**

3809 S. Providence Road, Suite A  
Columbia, MO 65203  
573-443-1041

[www.luetkemeyer.house.gov](http://www.luetkemeyer.house.gov)



### **Vicky Hartzler-Congresswoman**

2409 Hyde Park  
Jefferson City, MO 65109  
573-634-4884

[www.hartzler.house.gov](http://www.hartzler.house.gov)





## Legislative Representatives – State



**Mike Kehoe-Senator**  
**Miller/Morgan Counties**  
 MO Senate  
 201 West Capitol Avenue, Room 429  
 Jefferson City, MO 65101  
 573-751-2076  
[www.senate.mo.gov/kehoe](http://www.senate.mo.gov/kehoe)



**Dan Brown-Senator**  
**Camden County**  
 MO Senate  
 201 West Capitol Avenue, Room 419  
 Jefferson City, MO 65101  
 573-751-5713  
<http://www.senate.mo.gov/13info/members/mem16.htm>



**Mike Bernskoetter-Representative**  
**Miller County**  
 MO House of Representatives  
 201 West Capitol Avenue, Room 414  
 Jefferson City, MO 65101  
 573-751-0665  
[www.house.mo.gov/member.aspx?district=113&year=2012](http://www.house.mo.gov/member.aspx?district=113&year=2012)



**Diane Franklin-Representative**  
**Camden County**  
 MO House of Representatives  
 201 West Capitol Avenue, Room 206B  
 Jefferson City, MO 65101  
 573-751-1119  
[www.house.mo.gov/member.aspx?district=155&year=2012](http://www.house.mo.gov/member.aspx?district=155&year=2012)



**Rocky Miller-Representative**  
**Camden/Miller Counties**  
 MO House of Representatives  
 201 West Capitol Avenue, Room 115B  
 Jefferson City, MO 65101  
 573-751-3604  
[www.house.mo.gov/member.aspx?district=124](http://www.house.mo.gov/member.aspx?district=124)



**David Wood-Representative**  
**Miller/Morgan Counties**  
 MO House of Representatives  
 201 West Capitol Avenue, Room 115A  
 Jefferson City, MO 65101  
 573-751-2077  
[www.house.mo.gov/member.aspx?district=058](http://www.house.mo.gov/member.aspx?district=058)



Photo By: Lake of the Ozarks CVB



**May 2017**

Prepared By:  
Lake of the Ozarks Council of Local Governments  
P.O. Box 3553  
34 Roofener Street  
Camdenton, MO 65020  
[www.loclg.org](http://www.loclg.org)  
Phone: 573-346-5692 Fax: 573-346-9686